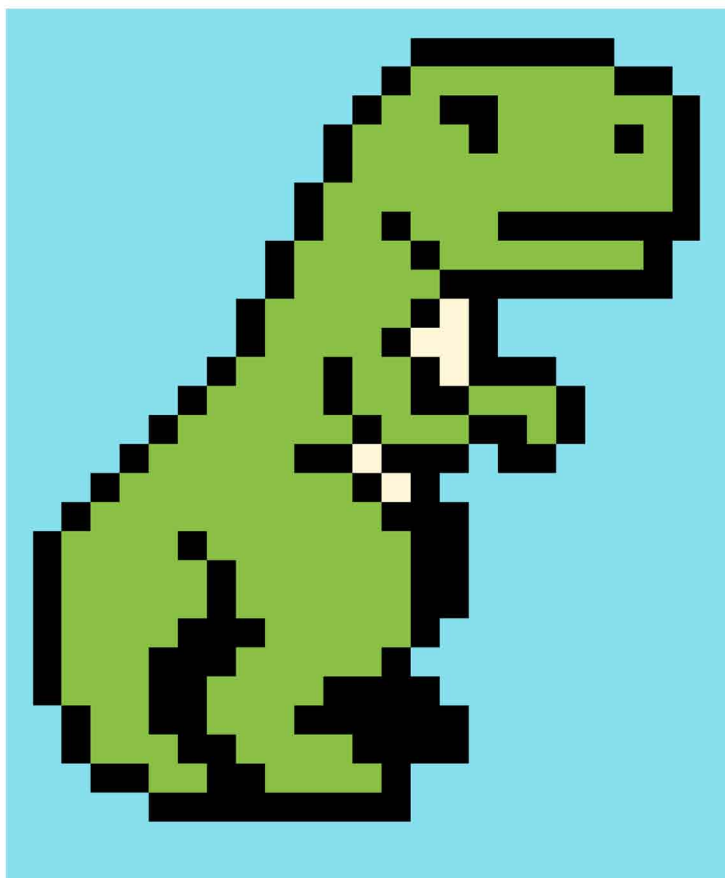








ANIMALS - T-REX



FINISHED QUILT MEASURES 38 ½" x 46"

BEFORE CUTTING STRIPS OF FABRIC, MAKE SURE YOUR FABRIC IS WASHED AND IRONED. CUT STRIPS FROM SELVAGE TO SELVAGE (ALONG THE LENGTH SO STRIPS ARE ALWAYS A MINIMUM OF 40 INCHES). ALWAYS TRIM THE SELVAGE BEFORE YOU BEGIN CUTTING A NEW FABRIC AND USE A ¼ INCH SEAM WHEN SEWING TOGETHER FABRICS. THE “RIGHT” SIDE OF THE FABRIC IS THE ONE WITH THE DESIGN OR MOST COLOR. THE “WRONG” SIDE IS THE BACK OF THE FABRIC.

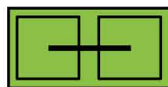
1) CUT THE FOLLOWING FABRICS:

COLOR	3 ½" STRIP	2" STRIP
 GREEN	4	3
 TAN	0	1
 BLACK	1	6
 LIGHT BLUE	6	7

SET 2" STRIPS ASIDE

WITH THE 3 ½" STRIPS:

FROM THE GREEN FABRIC CUT (10) 3 ½" x 6 ½" RECTANGLES,



(12) 3 ½" x 3 ½" SQUARES,



AND (7) 2" x 3 ½" RECTANGLES



FROM THE BLACK FABRIC CUT (1) 3 ½" x 6 ½" RECTANGLE,



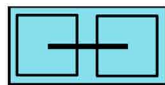
(4) 3 ½" x 3 ½" SQUARES,



AND (7) 2" x 3 ½" RECTANGLES



FROM THE LIGHT BLUE FABRIC CUT (28) 3 ½" x 6 ½" RECTANGLES,



(5) 3 ½" x 3 ½" SQUARES,



AND (9) 2" x 3 ½" RECTANGLE



SET THESE PIECES ASIDE.

2) USING THE 2" STRIPS, SEW THE RIGHT SIDES TOGETHER FOR EACH OF THE FOLLOWING COMBINATIONS:

2 LIGHT BLUE TO 2 BLACK

1 TAN TO 1 BLACK

3 GREEN TO 3 BLACK

CUT EACH OF THESE NEWLY COMBINED STRIPS IN HALF.

IRON EACH HALF OF THE STRIPS OPEN IN OPPOSITE DIRECTIONS. FOR EXAMPLE, IRON HALF OF THE TAN/BLACK STRIP TOWARDS THE TAN AND THE OTHER HALF TOWARDS THE BLACK. THESE NEW STRIPS SHOULD NOW MEASURE 3 1/2" IN WIDTH.

3) TAKE THE TAN/BLACK STRIP AND NEST THE SEAMS (LINING THE SEAMS UP IN OPPOSITE DIRECTIONS TO ALLOW THE FABRIC TO LINE UP PERFECTLY) BY LAYING ONE RIGHT SIDE UP AND THE OTHER WRONG SIDE UP ON TOP OF IT. LINE YOUR STRIPS UP EVENLY AND TRIM THE EDGE.

TOP VIEW:



SIDE VIEW:



THEN CUT (1) SET OF 3 1/2" x 3 1/2" SQUARES (2 TOTAL)



(2) SETS OF 3" x 2" RECTANGLES (4 TOTAL)



REPEAT THIS PROCESS FOR EACH SET OF STRIPS CUTTING:

LIGHT BLUE/BLACK - (6) SETS OF 3 1/2" x 3 1/2" SQUARES (12 TOTAL)

(8) SETS OF 3" x 2" RECTANGLES (16 TOTAL)

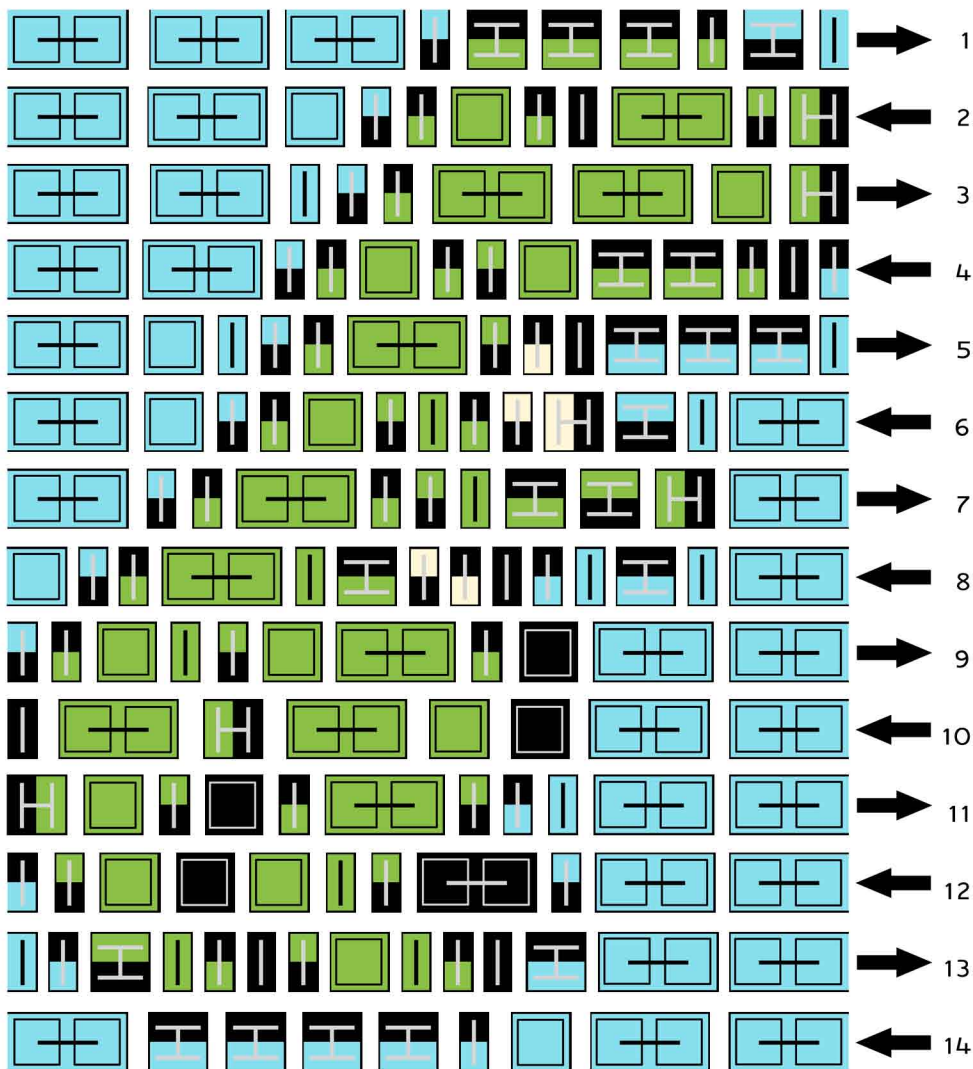


GREEN/BLACK - (7) SETS OF 3 1/2" x 3 1/2" SQUARES (14 TOTAL)

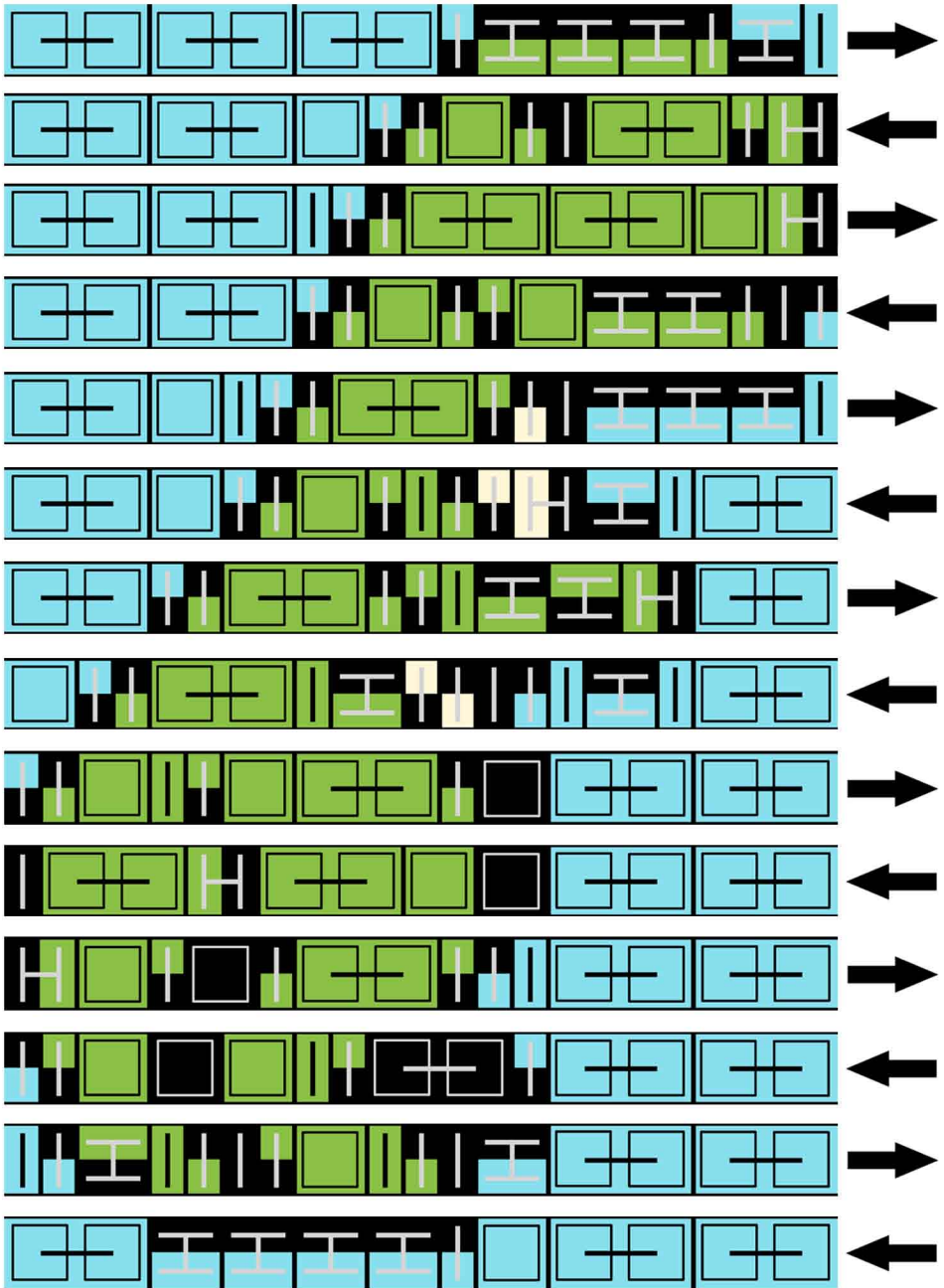
(15) SETS OF 3 1/2" x 2" RECTANGLES (30 TOTAL)



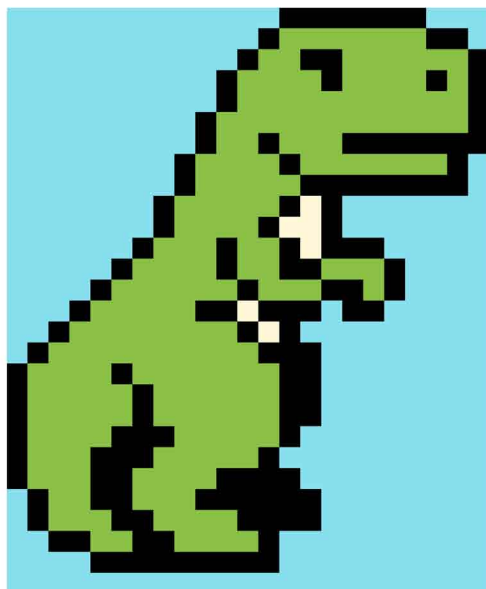
4) NOW IT'S TIME TO LAY OUT ALL OF THE PIECES. START WITH THE FIRST ROW AND LAY EACH PIECE RIGHT SIDE UP, MAKING SURE YOU PAY ATTENTION TO THE DIRECTION THE SEAM IS FACING. ALWAYS MAKE SURE THE SEAM IS FACING THE DIRECTION OF THE ARROW. IF THE SEAM IS FACING UP OR DOWN, MAKE SURE THAT THE PIECE NEXT TO IT IS NESTED (HAS THE SEAM IN THE OPPOSITE DIRECTION). RE-IRON ANY SEAMS THAT NEED TO BE CHANGED TO A DIFFERENT DIRECTION.



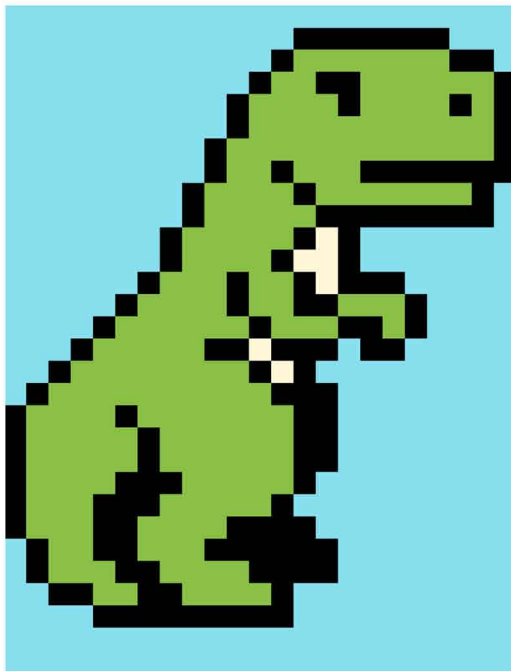
5) ASSEMBLE EACH ROW, SEWING RIGHT SIDES TOGETHER AND SEAMS FACING THE DIRECTION OF THE ARROW.



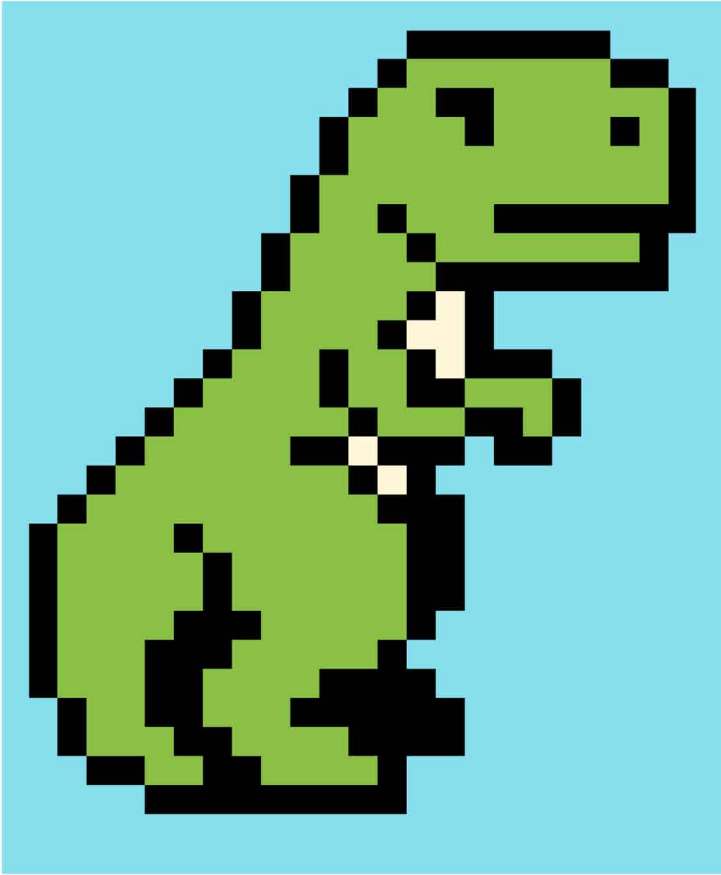
6) SEW THE ROWS TOGETHER, IT DOES NOT MATTER WHICH DIRECTION YOUR SEAMS POINT.



7) SEW A REMAINING LIGHT BLUE 2" STRIP ALONG THE TOP OF YOUR QUILT TOP AND ANOTHER STRIP ALONG THE BOTTOM OF THE QUILT TOP. IRON SEAMS AWAY FROM THE QUILT TOP.



8) FROM THE REMAINING 3 LIGHT BLUE 3 ½" STRIPS CUT ONE STRIP IN HALF. SEW ONE OF THESE ½ STRIPS TO EACH OF THE REMAINING 2 FULL STRIPS CREATING 2 STRIPS OF AT LEAST 60 INCHES. SEW THESE STRIPS TO THE LEFT AND RIGHT OF THE QUILT TOP. IRON SEAMS AWAY FROM THE QUILT TOP.



9) ADD ANY EXTRA BORDERS OR EMBELLISHMENTS AS YOU WISH.



REQUIRED FABRICS

COLOR	YARDAGE
GREEN	$\frac{3}{4}$
TAN	$\frac{1}{4}$
BLACK	$\frac{1}{2}$
LIGHT BLUE	1

©THE MANY PIECES THEORY 2021 – ALL RIGHTS RESERVED

THIS PATTERN IS PROTECTED BY COPYRIGHT. THE OWNER OF THIS PATTERN HAS A LICENSE TO MAKE QUILTS FOR THEIR OWN PERSONAL USE OR FOR GIFTS. IF THE PATTERN IS USED IN A CLASSROOM SETTING, EACH STUDENT MUST PURCHASE THE PATTERN. ALL FORMS OF REPRODUCTION OF THIS PATTERN (WHETHER MANUAL, DIGITAL, ELECTRONIC, OR COMPUTERIZED) IS PROHIBITED. IF YOU WOULD LIKE TO DISPLAY THE FINISHED PRODUCT ONLINE OR IN A QUILT SHOW, YOU MAY DO SO IF YOU GIVE ATTRIBUTION FOR THE PATTERN TO QUILTONI. TO EXTEND THIS LICENSE, PLEASE CONTACT TONI SMITH AT [TONI@QUILTONI.COM](mailto:Toni@QUILTONI.COM).

THE FOLLOWING PATTERN WAS CREATED BY:

TONI SMITH OF  (QUILTONI.COM) &



NICOLE ELLISON OF  (CRAFTIGURUMI.COM)

