

## Short blouse

Sizes 36 – 46

### You will need

0.9 – 1.0 m patterned viscose, 150 cm wide

0.2 - 0.3 m plain viscose, 150 cm wide

Woven interlining G710

Tear-away or water-soluble embroidery stabilizer (such as Soluvlies)

Spray adhesive

1 button, diameter 25 mm

1 snap fastener, diameter 12 mm

Sewing thread

bernette sewing machine

Edgestitch foot (optionally available for the Crafter model)

Buttonhole foot

Button sew-on foot (optionally available for the Crafter model)

### Tips:

Wash the fabric before cutting out, as fabrics can run and shrink.

Transfer all the markings from the pattern onto the fabric.

### Seam allowances (must be added):

Use the numbers in circles on the pattern.

### Cutting out

**A** 2 x upper front piece

**B** 2 x middle front piece

**C** 2 x lower front piece

**D** 1 x back piece on the fold

**E** 2 x neckline facing in the shell fabric + interlining

Without a pattern piece

1 x waistband

Size 36: 98 cm

Size 38: 102 cm

Size 40: 106 cm

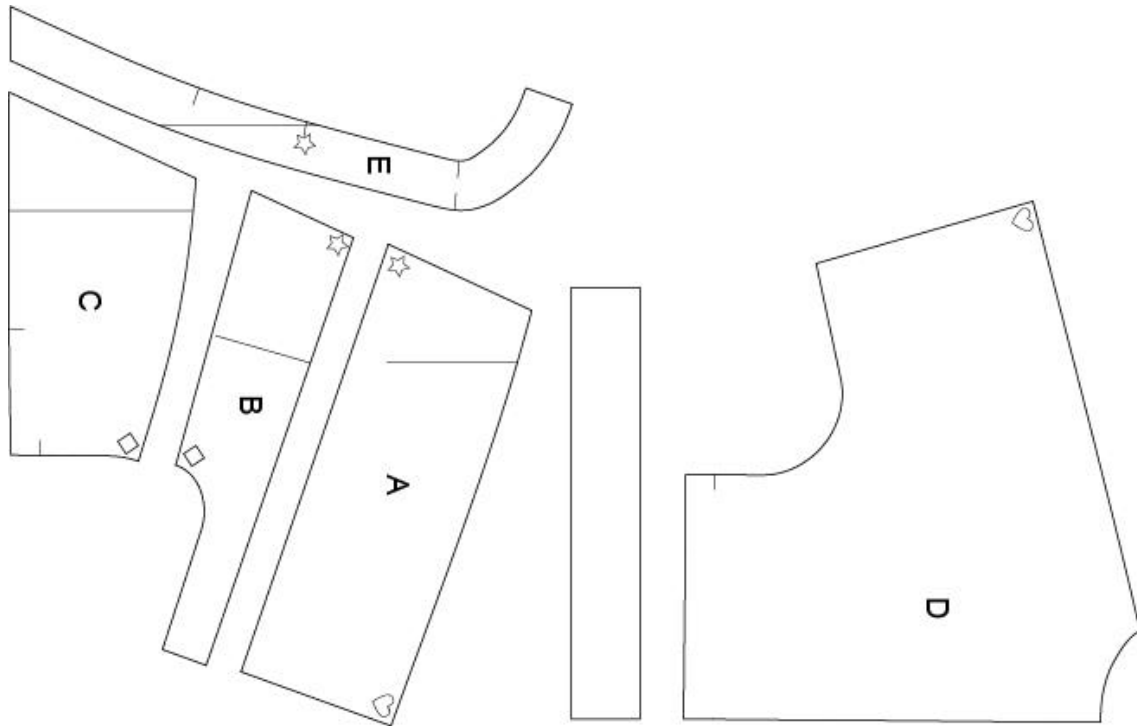
Size 42: 110 cm

Size 44: 114 cm

Size 46: 118 cm

Width for all sizes: 7 cm, finished width 3.5 cm + interlining

# bernette



**Seams:** Straight stitch, stitch length standard setting 2.5

**Topstitching:** Straight stitch, stitch length 3

**Decorative stitch:** Blanket stitch (D), stitch length S2, stitch width 5

**Gathering:** Straight stitch, stitch length 4

**Overcasting the edges:** Use zigzag (B), overlock stitch (F) or a serger

**Buttonhole:** Buttonhole stitch, stitch width 6

**Sewing on the button:** Zigzag stitch, stitch length 0, stitch width depending on the distance between the buttonholes (lower feed dog if necessary)

## Sewing instructions

**Preparation:** Iron the interlining onto the neckline facing and the waistband and allow to cool.

**Panel seams:** Sew the upper front pieces onto the middle pieces with the right sides together and then sew them onto the lower pieces.



Overcast the seams and iron the seam allowances towards the middle section.



Place tear-away or water-soluble stabilizer under the panel seams of the front pieces. Select blanket stitch on the stitch selection wheel (see above for settings). First, sew a test piece using a spare piece of fabric to see if the stitch looks as desired.



# bernette

Position the stitch so that it stitches exactly along the panel seam and is visible on the middle front section. Topstitch all four seams like this. Carefully remove the stabilizer or wash it out later.



Place the front and back pieces with the right sides together, sew the shoulder and side seams together and overcast.



**Neckline facing:** Place at the center back with the right sides together and close, then overcast the seam allowances at the center back and facing edges. Sew the facing onto the neck of the front and back pieces with the right sides together, making sure the markings line up.





Cut into the seam allowances on the curve,



Iron the facing inwards, pin firmly and topstitch 4 cm from the edge on the right side.





**Waistband:** Overcast one of the long edges. Place the waistband lengthwise with the right sides together and close the short sides, leaving out the seam allowances on the long sides.





# bernette

Cut off the corners and turn the waistband the right way round. Iron the fold along the long edge.



For the gathering, increase the stitch length to 4 and pull out both threads approx. 10 cm at the back. Sew a seam along the bottom edge of the blouse inside the seam allowance from the middle of one front piece (notch), round the back to the front middle on the other side and leave the threads approx. 10 cm long at the end. Gather the bottom edge of the blouse so it is the same as the width of the waistband by pulling the lower thread of the seam from both sides and distribute the width evenly.





# bernette

Pin the raw edge of the waistband onto the bottom edge of the blouse with the right sides together and sew it on.



Iron the seam allowances into the waistband, then fold over the corners at the end of the waistband.





# bernette

Pin the waistband and topstitch on the right side in the seam shadow.



**Sleeves:** Overcast, iron the seam allowance over, pin and topstitch.

**Button and buttonhole:** Sew a buttonhole into the waistband overlap at a distance of approx. 2 cm from the front edge.





# bernette

Place the front middle on the front middle, mark the button position on the overlap with a needle at the start of the buttonhole and sew on the button using the button sew-on foot.



Sew a snap fastener onto the waistband overlap at the same distance from the edge. Transfer the position to the inner waistband overlap and sew the push button onto the inside of the waistband only so that the stitches are not visible on the outside.



bernette

