

2

10 x 10 cm

3" x 3"

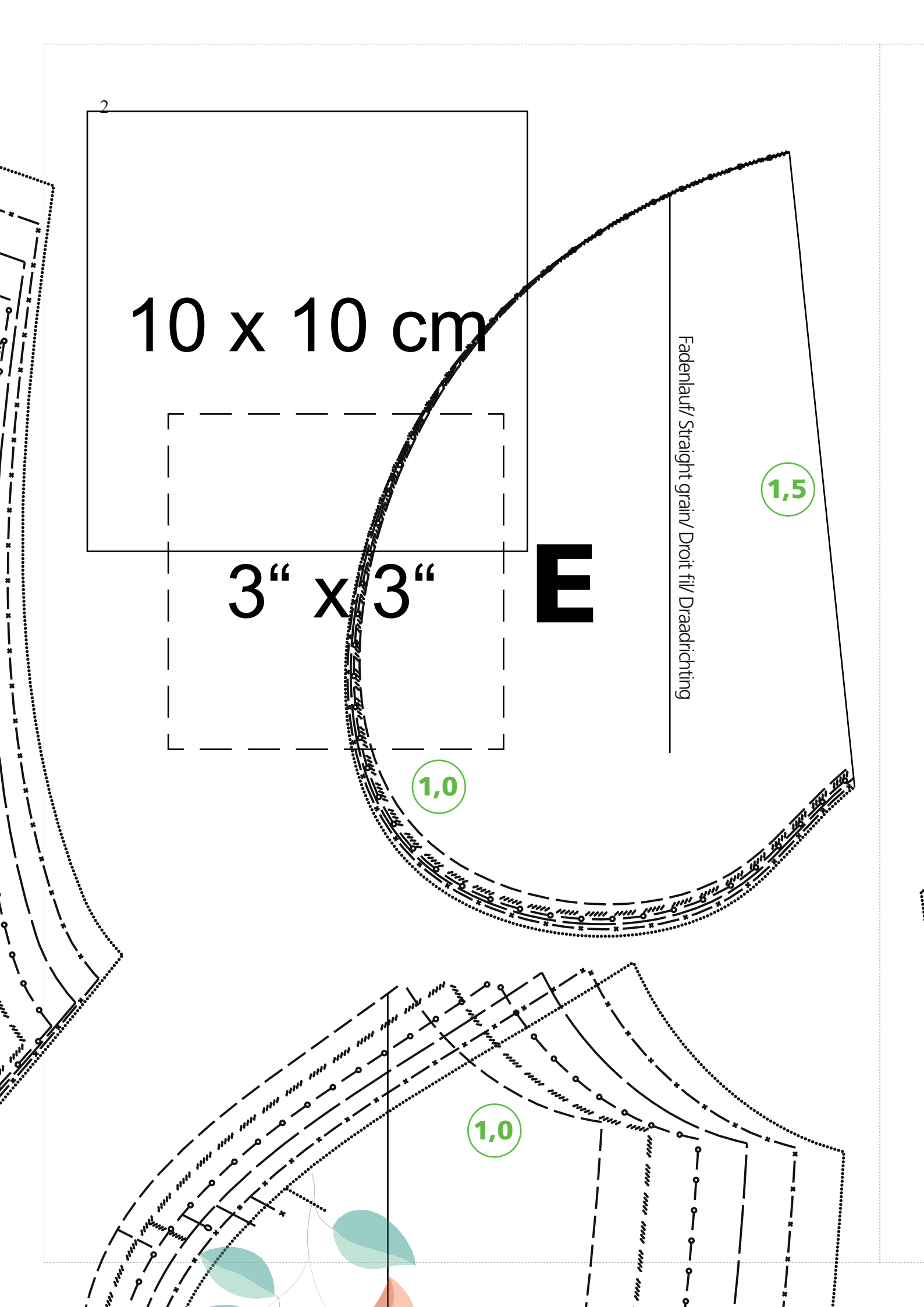
E

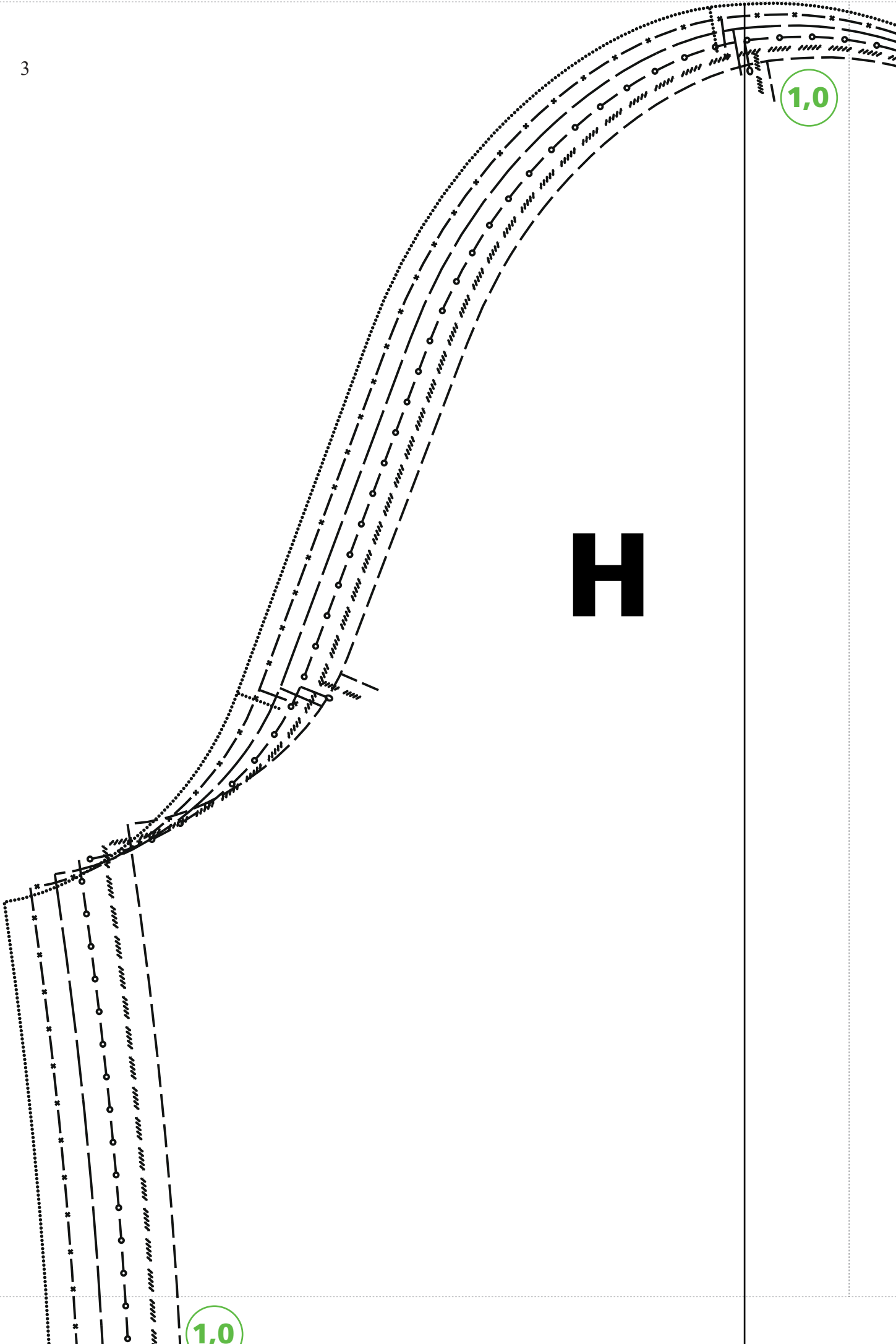
Fadenlauf/ Straight grain/ Droit fil/ Draadrichting

1,5

1,0

1,0

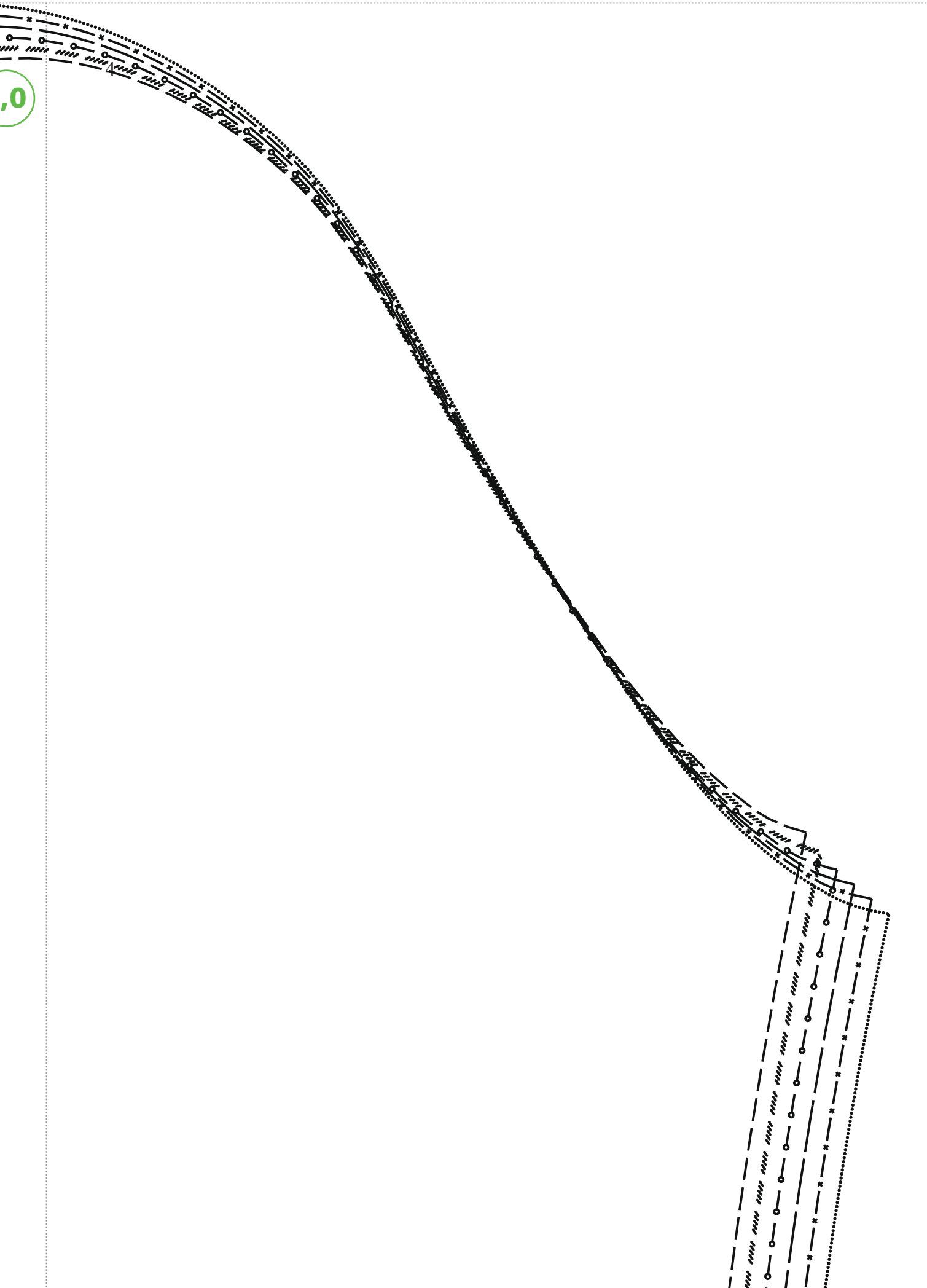




1,0

H

1,0



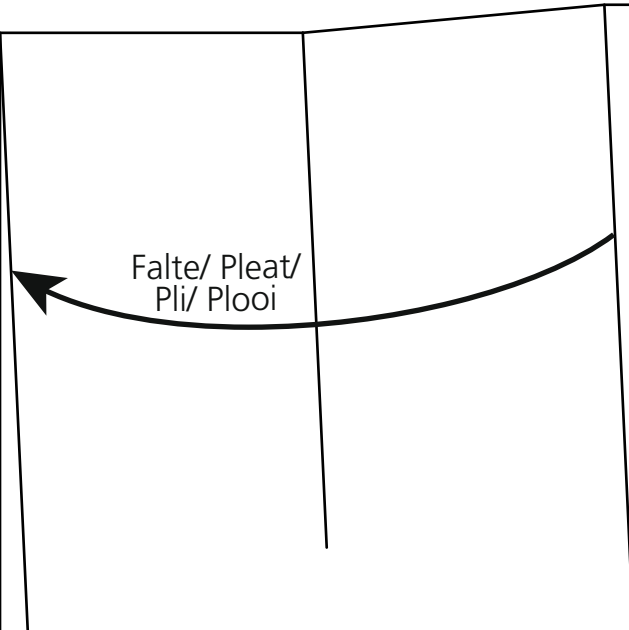
,0

1,0

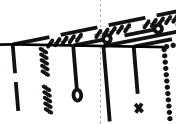
A

1,0

1,0



1,0



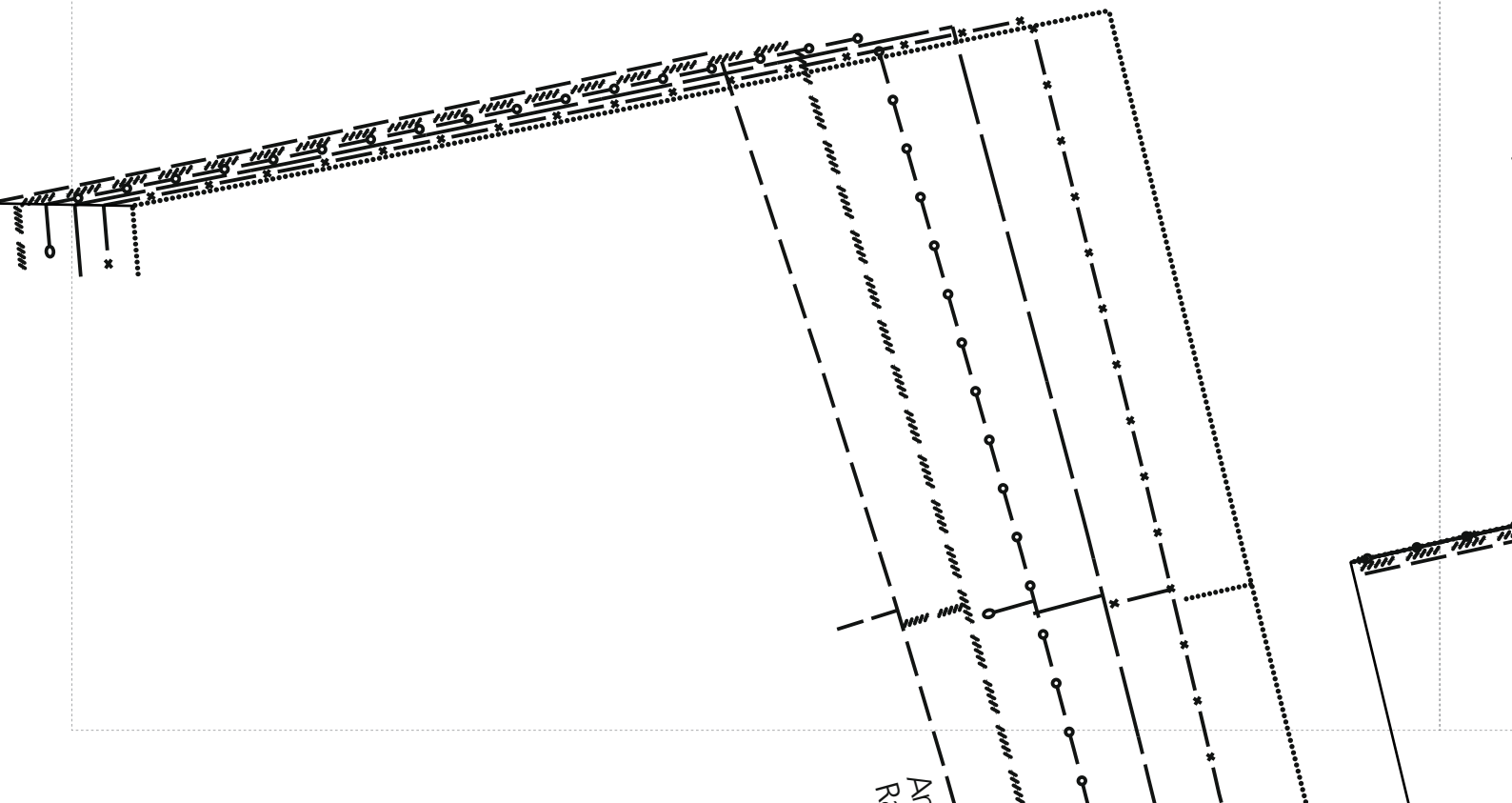
Fadenlauf/ Straight grain/ Droit fil/ Draadrichting

B

1,0

1,5

1,0



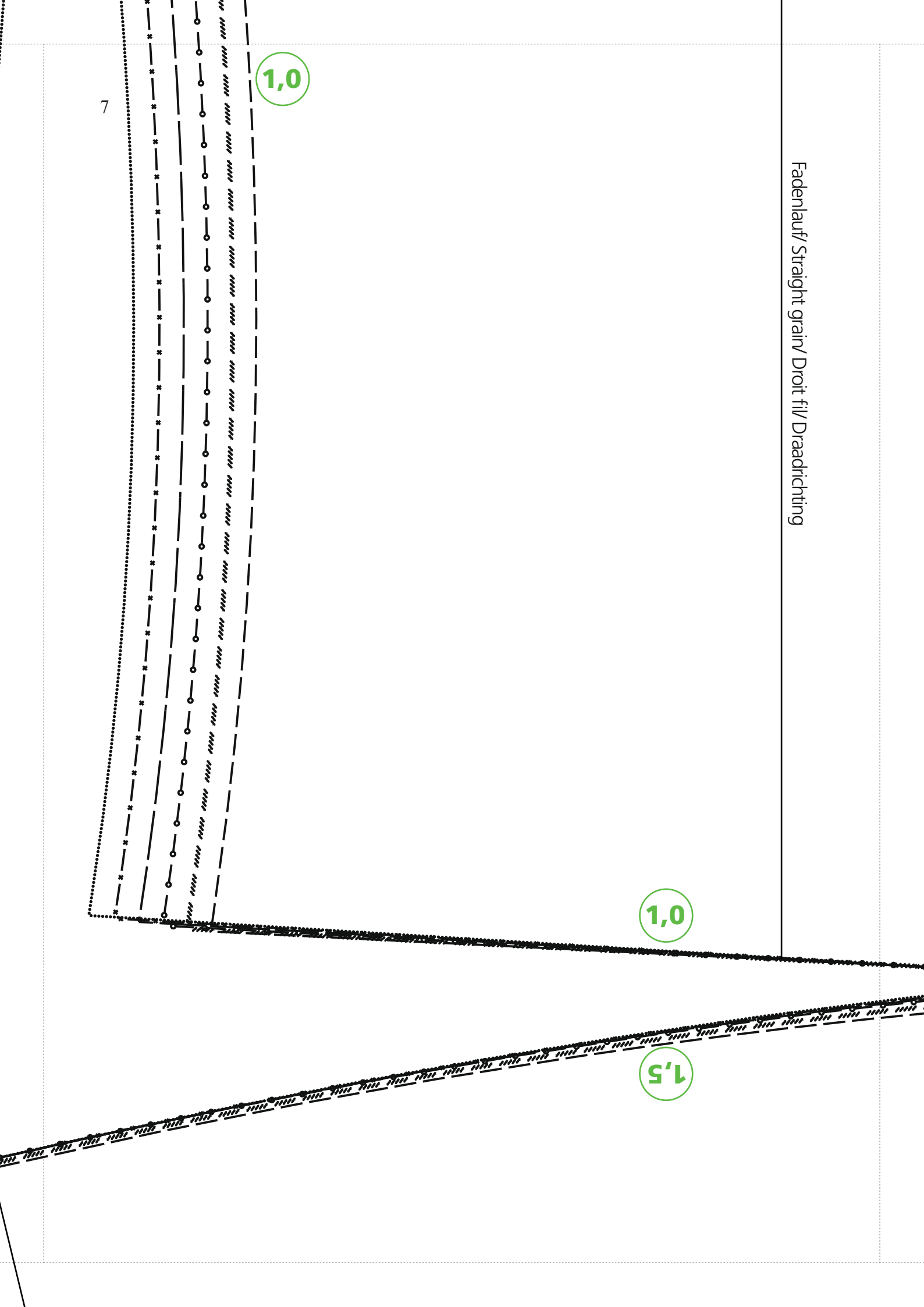
Fadenlauf/ Straight grain/ Droit fil/ Draadrichting

7

1,0

1,0

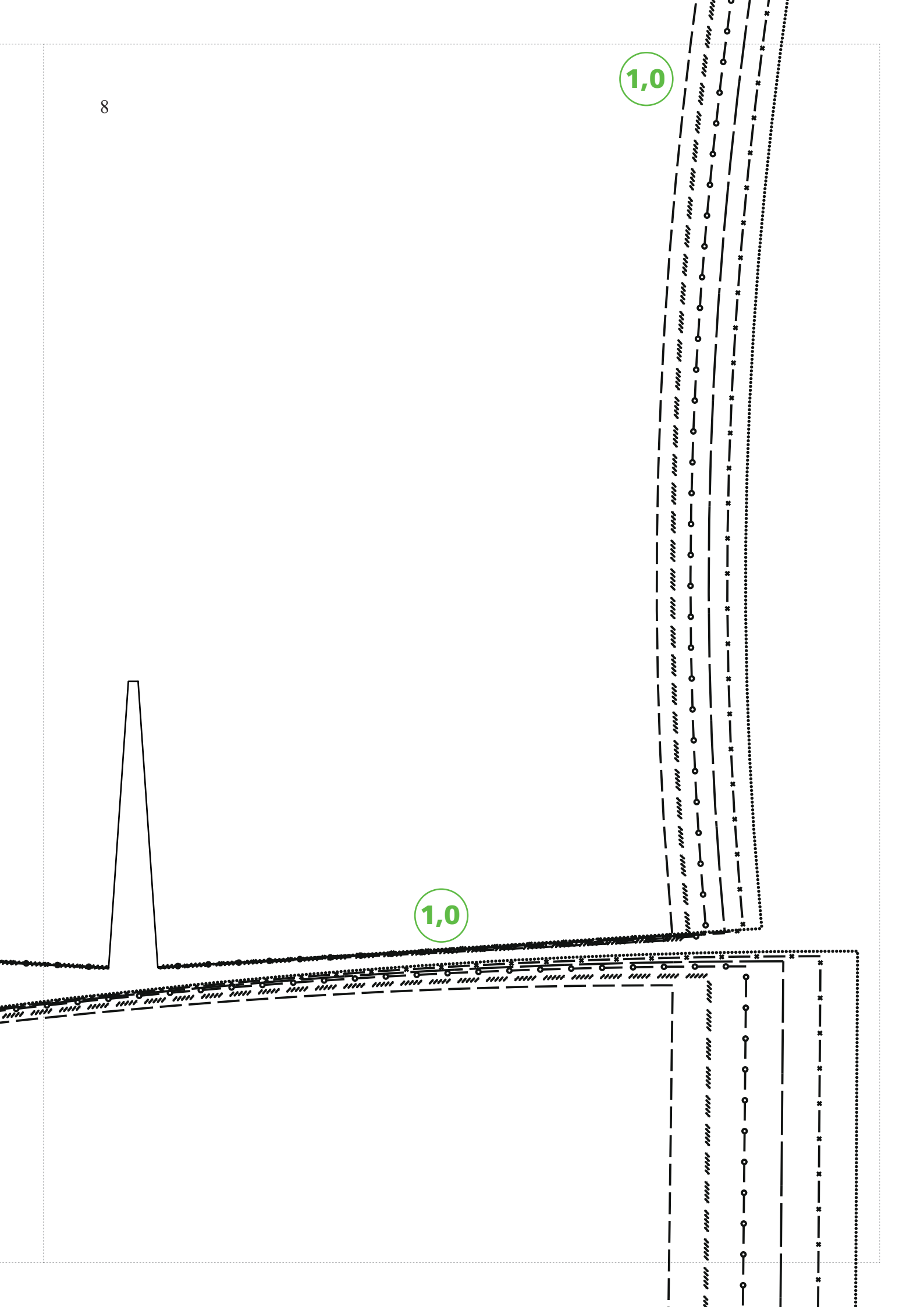
1,5



8

1,0

1,0



Für Körpergröße/ for height/ pour la taille/ Maten voor lichaamsgrootte 168 cm								
Größe/ Size/ Taille/ Maat	34	36	38	40	42	44	46	48
Oberweite/Bust/ Poitrine/ Bovenwijdte	80	84	88	92	96	100	104	110
Taillenweite/ Waist/ Taille/ Taillewijdte	64	67	71	75	79	83	87	93
Hüftweite/ Hip/ Hanche/ Heupwijdte	90	93	96	99	102	105	108	114
Vord. Taillengl./ Front waist length/ Longueur taille devant/ Taillelengte voor	42	43	44	45	46	47	48	49
Rückw. Taillengl./ Back waist length/ Longueur taille dos/ Ruglengte tot taille	41	41	41	42	42	42	42	43

Legende/ Legend/ Légend	
Größe/	34
Size/	36
Taille/	38
Maat	40
	42
	44
	46
	48

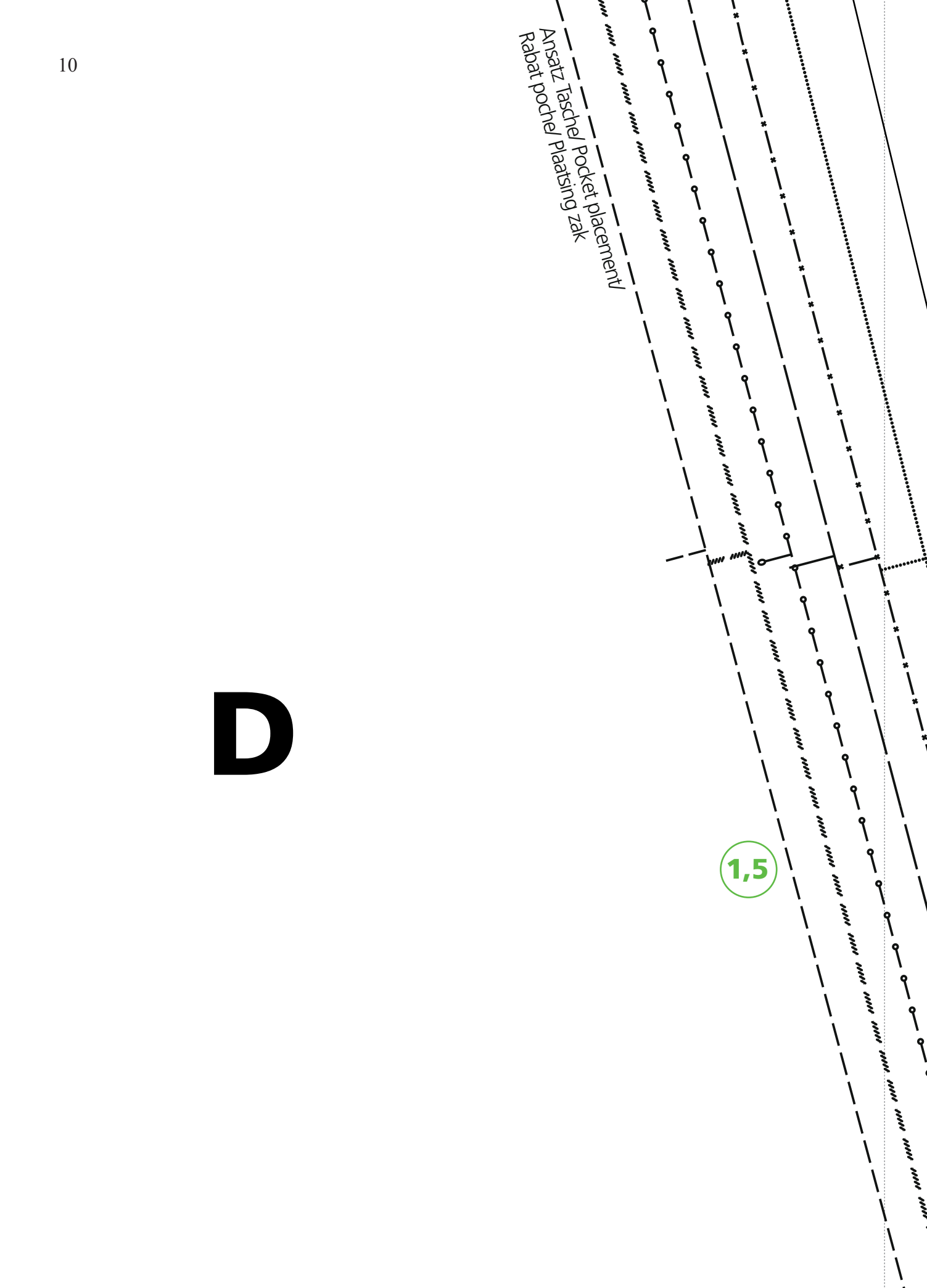
For height 66 Inch:								
Taille	34	36	38	40	42	44	46	48
Bust	31,5	33,0	34,6	36,2	37,8	39,4	40,9	43,3
Waist	25,2	26,4	28,0	29,5	31,1	32,7	34,3	37,0
Hip	35,4	36,6	37,8	39,0	40,2	41,3	42,5	44,9
Front waist length	16,5	17,0	17,3	17,7	18,0	18,5	18,9	19,2
Back waist length/	16,0	16,0	16,0	16,5	16,5	16,5	16,5	16,9

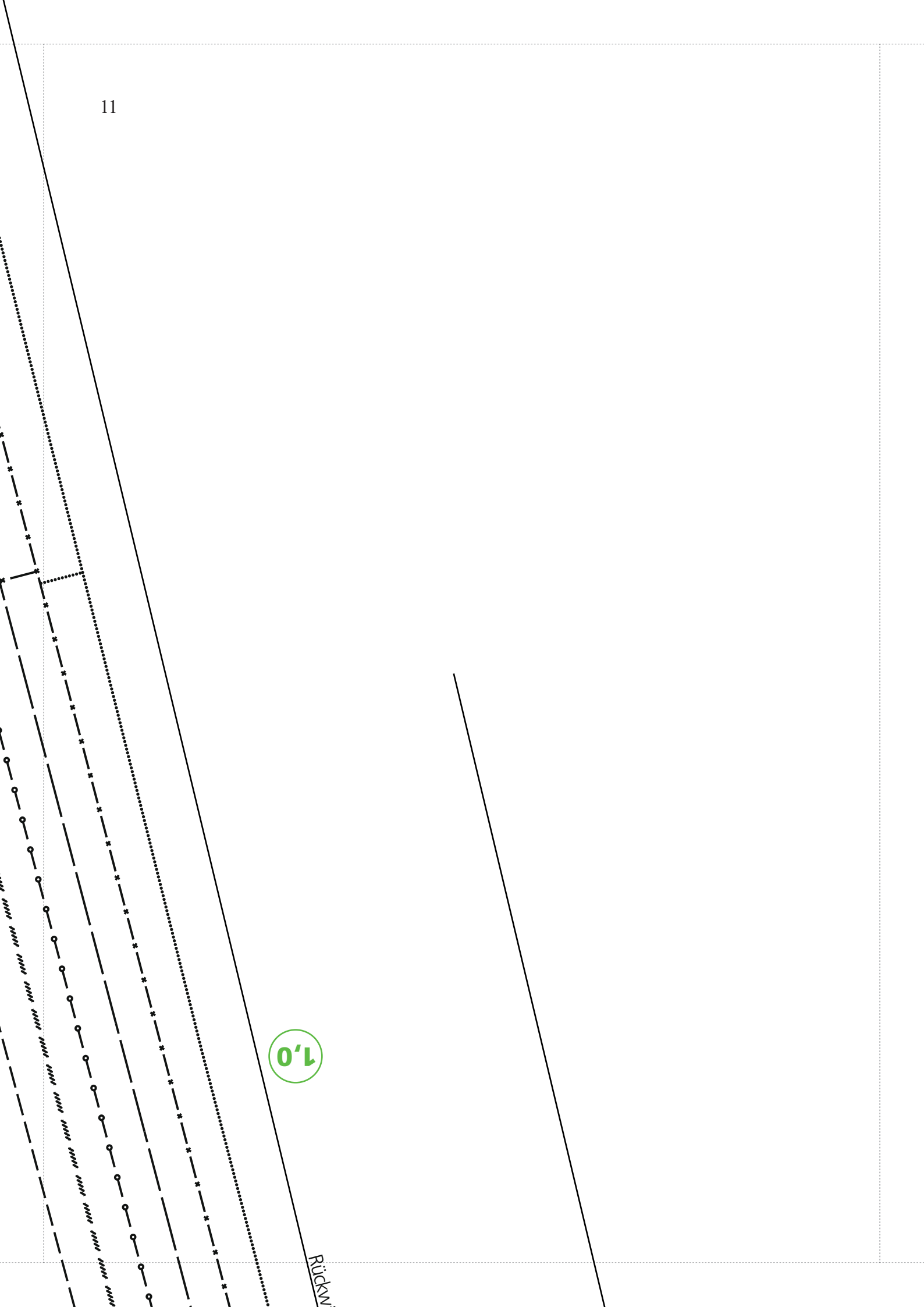


D

Ansatz Tasche/ Pocket placement
Rabat poche/ Platsing zak

1,5



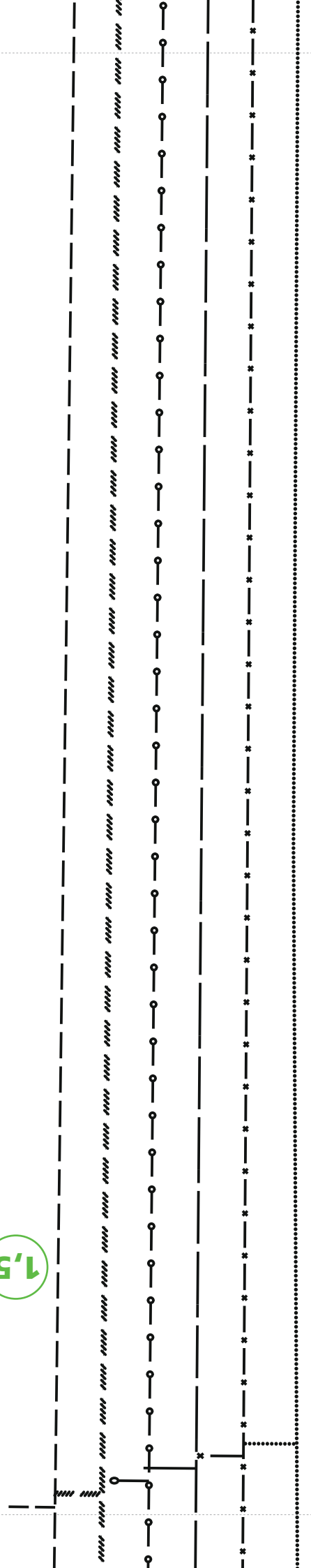


1,0

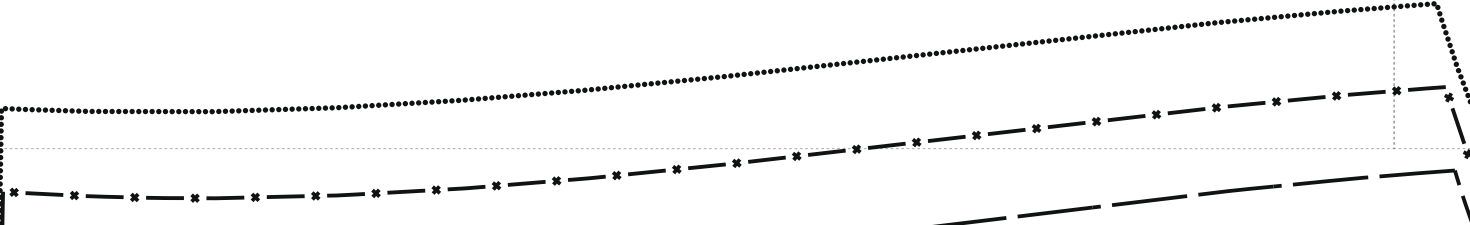
Rücken

G

1,5



Vordere Mitte Stoffbruch Fadenlauf/ Centre front fold straight grain/M
13



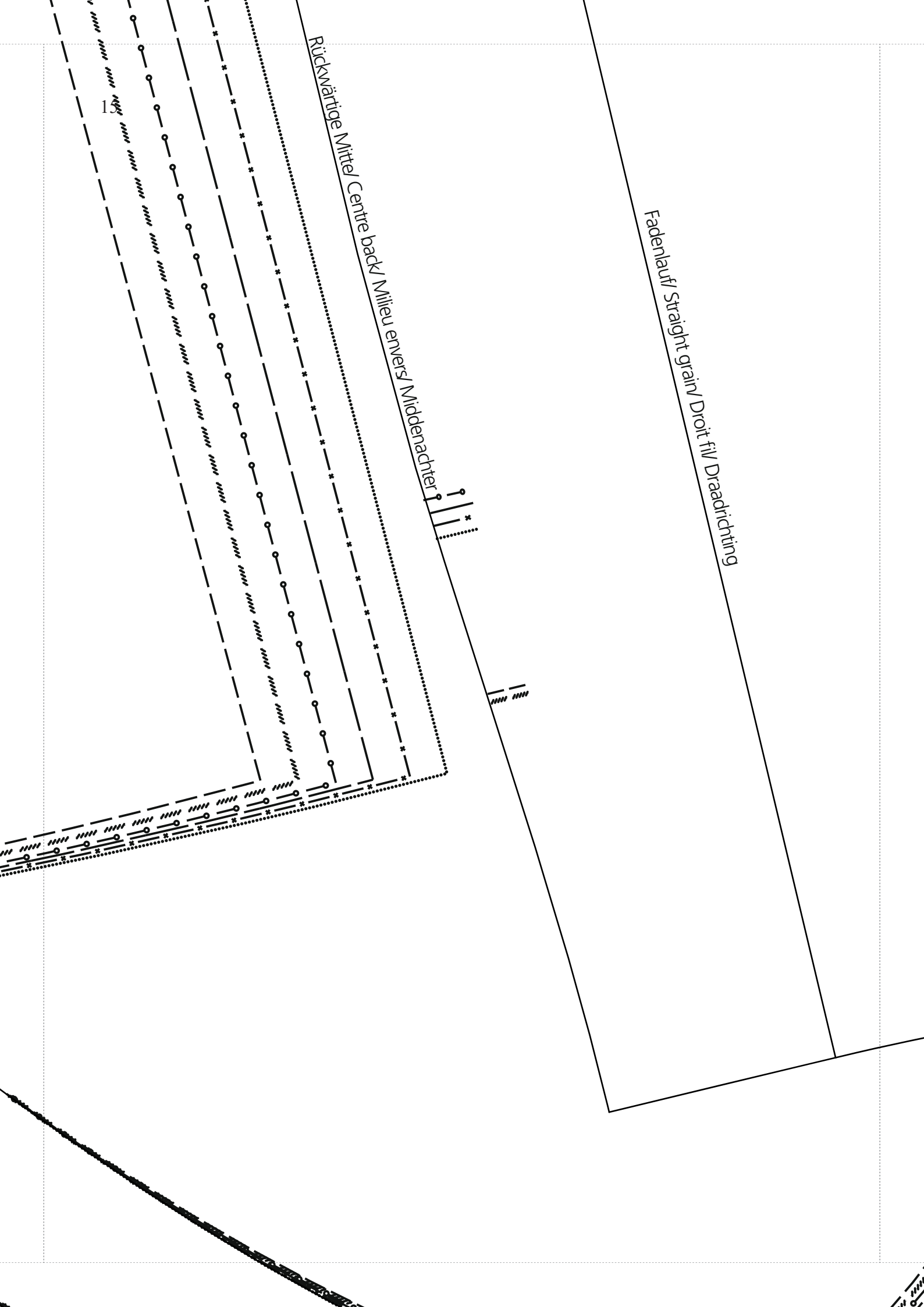
1,5

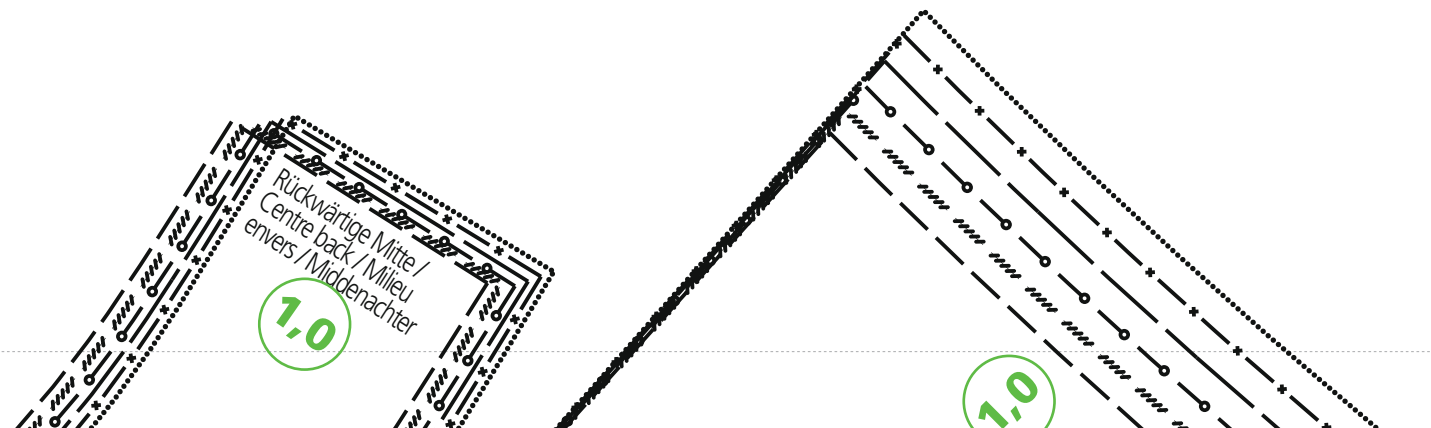
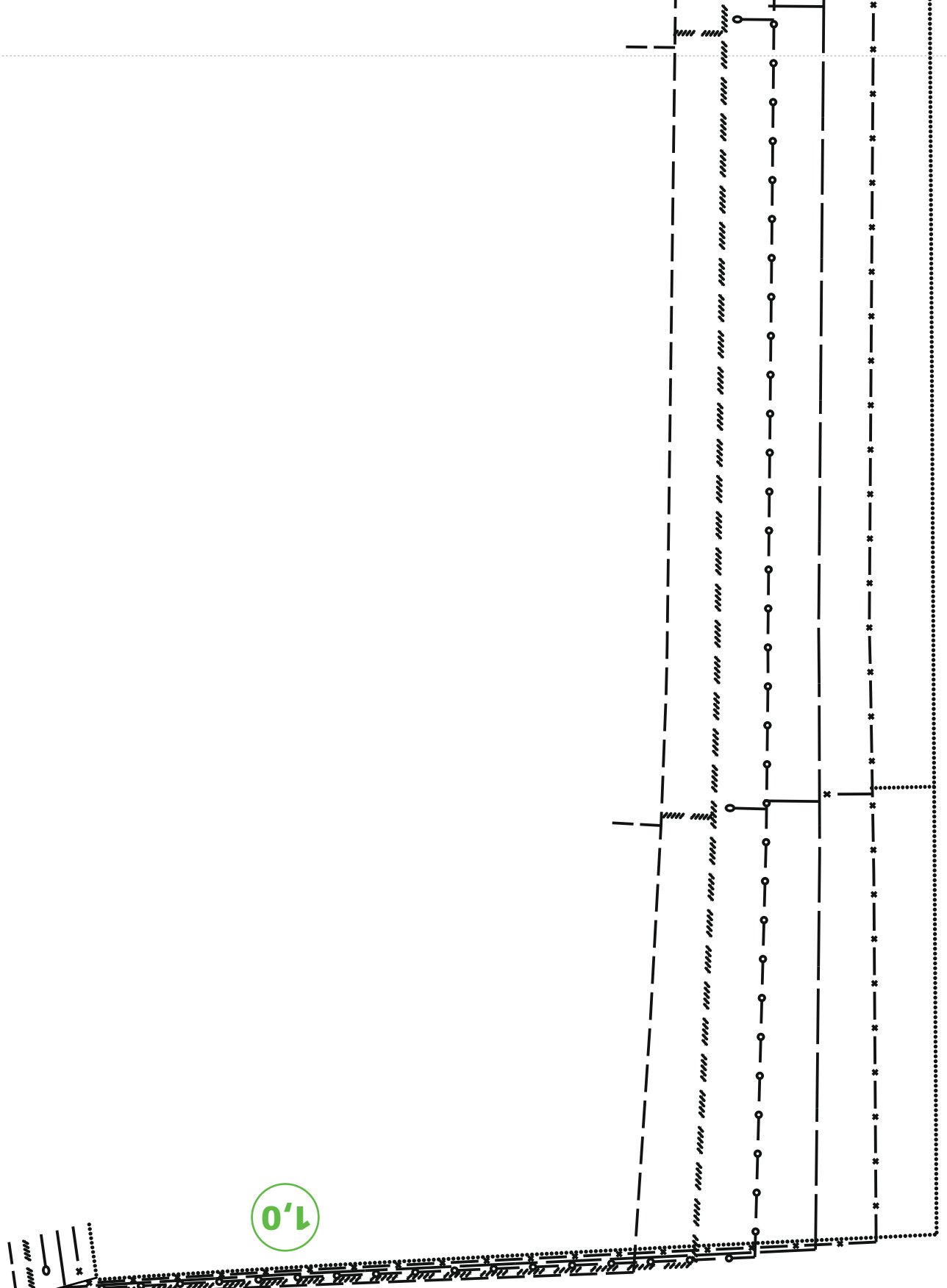
Vordere Mitte Stoffbruch
Fadenlauf/ Centre front fold
straight grain/ Milieu endroit pli
droit fil/ Middenvoor stofvouw
draadrichting

Fadenlauf/ Straight grain/ Droit fil/ Draadrichting

Rückwärtige Mittel/ Centre back/ Milieu envers/ Modenachter

1

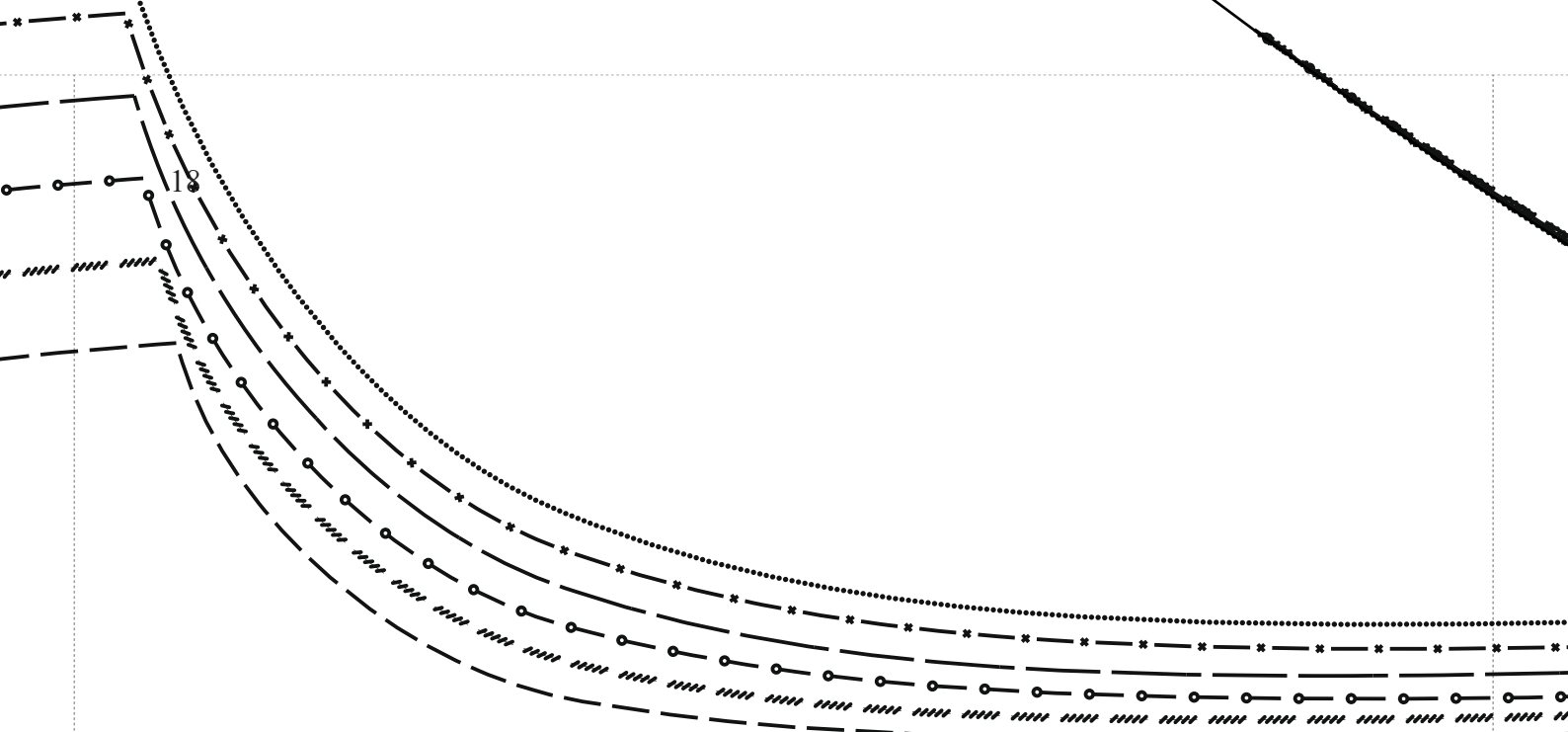




Rückwärtige Mitte /
Centre back / Milieu
envers / Middenachter

1,0

1,0



1,0



Fadenlauf/ Straight grain/ Droit fil/ Draadrichting

Rückwärtige Mitte/ Centre back/ Milieu envers/ Middenachter



1,0

0

1,0

1,0

1,0

