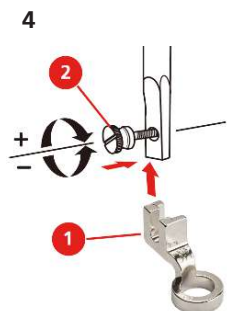
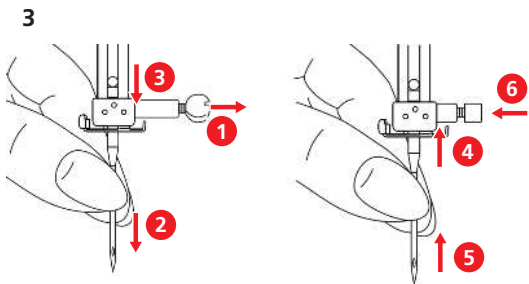
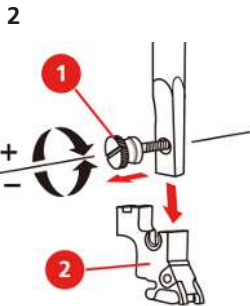
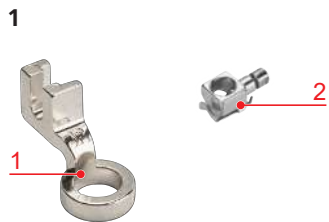


# Ruler Foot Set



## Information

### Scope of Delivery

- Ruler Foot JR (1) (Fig. 1)
- Needle Holder (2) (Fig. 1)

### Intended Use

- For quilting with 1/4" rulers.
- For free-motion quilting.

### For Your Safety

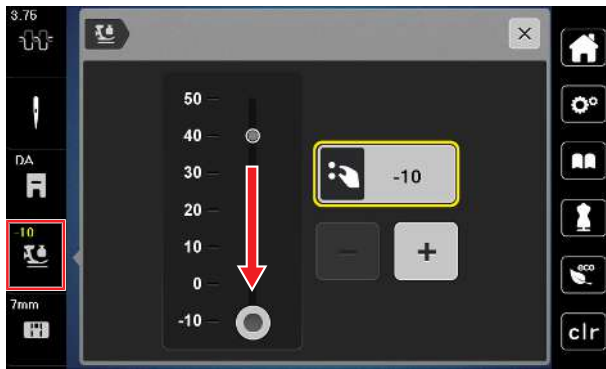
Before using this accessory, please read this instruction manual as well as the instruction manual of your machine carefully.

## Application

### Installing the Ruler Foot

- > Update firmware according to «Firmware Update Step by Step».
- > Switch the machine off and disconnect it from the power supply system.
- > Remove the presser foot holder. (Fig. 2)
- > Remove the needle and replace the needle holder with the enclosed needle holder. (Fig. 3)
- > Install the ruler foot. (Fig. 4)

5



## Adjusting Settings

- > To raise the foot height further for use with thicker materials, set the presser foot pressure to below zero. (Fig. 5)
- > Limit the hovering height of the presser foot to maximum 2 mm in the sewing settings for the «Needle Up/Down» button. (Fig. 6)

6

