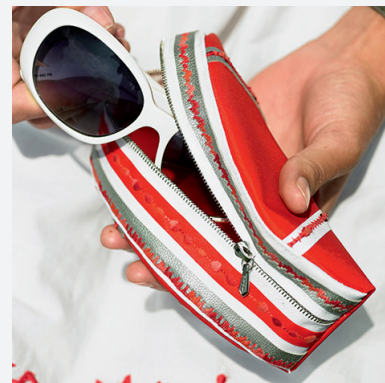
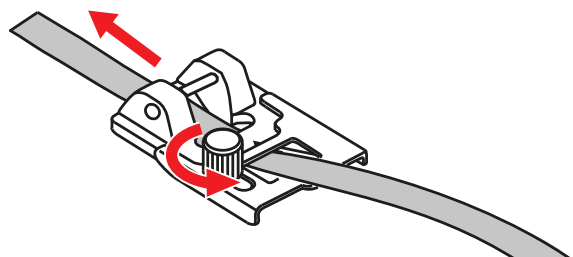


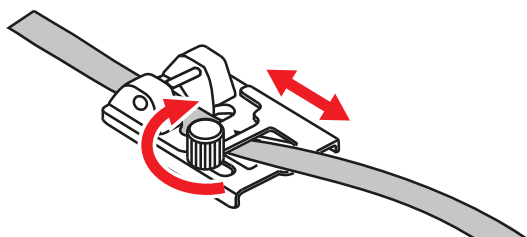
Ribbon-couching Foot



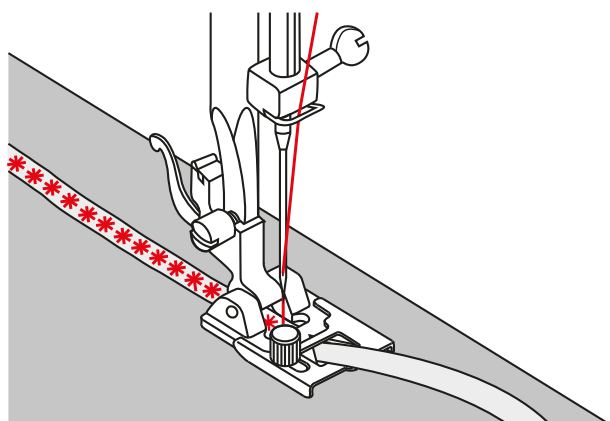
1



2



3



Information

Purpose

- For couching satin and soutache ribbons up to a width of 5 mm.

For your safety

Before using this accessory, please read the instruction manual at hand as well as the instruction manual of your machine carefully.

Application

Couching ribbons

- > Set a straight stitch, zigzag stitch or a decorative stitch.
- > Select the stitch length as desired.
- > Match the stitch width with the ribbon.
- > Loosen the screw at the presser foot and push the tape through the opening under the presser foot. (Fig. 1)
- > Adjust the position of the ribbon guide so that the ribbon lies optimally and securely in the guide rail:
 - For narrow ribbons, push the guide backwards.
 - For wide belts push the guide towards the front.
- > Tighten the screw.(Fig. 2)
- > Attach the Ribbon-couching Foot.
- > Place the fabric beneath the presser foot and sew slowly.
- > Continue sewing slowly, guiding the tape under the groove. (Fig. 3)
- > Sew a few securing stitches at the beginning and end of sewing.