



b05  
CRAFTER



b05  
ACADEMY

Kratke upute za rad

bernette

SWISS DESIGN



# VAŽNE SIGURNOSNE INSTRUKCIJE

Pazite na slijedeće sigurnosne instrukcije prije nego počnete sa radom na ovom stroju. Pročitajte pažljivo prije upotrebe stroja ove upute za rad.

## OPASNOST!

Za zaštitu od električnog udara:

- Ne ostavljajte stroj bez nadzora, dok je uključen u naponsku mrežu.
- Nakon upotrebe šivaćeg stroja uvijek odvojite stroj iz naponske mreže.

Za zaštitu od LED-zračenja:

- Ne promatrajte LED-Lampu direktno sa optičkim instrumentima (npr. sa povećalom). LED-lampa odgovara zaštitnoj klasi 1M.
- Kontaktirajte stručni bernette servis ako je LED-Lampa oštećena ili u defektu.

## UPOZORENJE

Za zaštitu od opekotina, vatre ili električnog udara personala:

- Za upotrebu stroja koristite samo naponski kabel koji ste dobili uz stroj. Naponski kabel za USA i Kanadu (utikač NEMA 1-15) smije biti korišten na mrežnom naponu prema zemlji od makimalno 150 V.
- Ovaj stroj se smije koristiti samo za svrhe koji su opisani u ovim uputama za rad.
- Stroj držite samo u suhim prostorijama.
- Stroj nemojte upotrebljavati ako je bio izložen vazi ili vlažnom okruženju.
- Stroj nemojte koristiti kao igračku. Povećan oprez, kod djece koje koriste stroj ili djece koja se nalaze u blizini stroja.
- Ovaj stroj mogu koristiti djeca u dobi od 8 godina i više te osobe sa smanjenim fizičkim, senzornim ili mentalnim sposobnostima ili nedostatkom iskustva i znanja ako su pod nadzorom ili ako su upućeni u sigurnu upotrebu stroja i ako razumiju opasnosti koje iz toga proizlaze.
- Djeca se nesmiju igrati sa ovim strojem.
- Radnje čišćenja i održavanja stroja nesmiju djeca vršiti bez nadzora iskusne odrasle osobe.
- Ovaj stroj nemojte koristiti ako je oštećen kabel ili utikač, ako stroj ne radi ispravno, ako je pao na pod ili u vodu. U tom slučaju odnesite stroj u najbliži ovlašteni bernette stručni servis na provjeru ili popravak.
- Koristite samo od proizvođača preporučeni pribor.
- Ovaj stroj nemojte koristiti ako su blokirani ventilacijski otvori. Držite slobodne sve ventilacijske otvore od prašine ili ostataka tkanine.
- Ne stavljajte predmete u otvore stroja.
- Ne postavljajte predmete na nožni reostat.

- Stroj koristite samo sa nožnim reostatom jednim od slijedećih modela:
  - za b05 CRAFTER: FC-2902D, FC-1902A
  - za b05 ACADEMY: KD-2902, KD-1902
- Nemojte koristiti stroj tamo gdje se koriste pogonska goriva (sprejevi) ili kisik.
- Držite prste dalje od pokretnih dijelova. Specijalni oprez morate imati u području igle.
- Za vrijeme dok šivate nesmiijete povlačiti i gurati tkaninu. To može uzrokovati puknuće igle.
- Kod radnji oko igle - kao npr. udijevanje igle, izmjena igle, udijevanje hvatača konca ili izmjena šivaće stopice – glavni prekidač postavite na «0».
- Ne koristite savinute igle.
- Uvijek koristite jednu originalnu bernette ubodnu pločicu. Jedna kriva ubodna pločica može uzrokovati puknuće igle.
- Za isključenje glavni prekidač postavite na «0» i izvucite utikač iz utičnice. Pri tome uvijek povlačite za utikač a ne za kabel.
- Izvucite utikač za napajanje kada uklanjate ili otvarate poklopce, podmazujete stroj ili izvodite druge radove čišćenja i održavanja spomenute u ovim uputama za uporabu.
- Stroj je duplo izoliran (osim USA, Kanade i Japana). Koristite samo originalne rezervne dijelove. Pripazite na napomenu o održavanju duplo izoliranih proizvoda.
- Razina zvučnog tlaka u normalnim uvjetima manji je od 80 dB(A).

# Važne napomene

## Dostupnost priručnika

Kratke upute spadaju u stroj.

- Čuvajte kratke upute za stroj na prikladnom mjestu u blizini stroja i pripremite ih za referencu.
- Detaljne upute za rad možete preuzeti sa [www.mybernette.com](http://www.mybernette.com).

Kada stroj dajete u treće ruke onda uz stroj obavezno predajte i kratke upute za rad.

## Predodređena namjena

Vaš bernette šivači stroj konstruiran je i koncipiran samo za privatnu uporabu u domaćinstvu. Ona služi za šivanje tkanina i drugih materijala koji su opisani u ovim uputama za rad. Svaka druga namjena vrijedi kao neodređena namjena. BERNINA ne odgovara za posljedice u slučaju jedne neprihvatljive primjene.

## Održavanje duplo izoliranih proizvoda

Jedan duplo izolirani proizvod je sastavljen od dva izolirana dijela umjesto uzemljenja. Uzemljenje nije sadržano u jednom duplo izoliranom proizvodu niti se nesmiije naknadno umetnuti. Održavanje duplo izoliranih proizvoda zahtjeva pažnju i veliko znanje istema i mora se izvoditi samo od strane kvalificiranog personala. Za popravak i servis se smiju koristiti samo originalni rezervni dijelovi. Jedan duplo izolirani proizvod je označen na slijedeći način: «Duplo izolirano» ili «Dvostruka izolacija».



Ovaj simbol može također označavati takav proizvod.

## Zaštita okoliša

BERNINA International AG osjeća se posvećena zaštiti okoliša. Nastojimo povećati ekološku učinkovitost naših proizvoda kontinuiranim poboljšanjem u smislu dizajna i tehnologije proizvodnje.



Stroj je označen simbolom kante za smeće. To znači da stroj ne treba odlagati zajedno s kućnim otpadom kada više nije potreban. Nepravilnim odlaganjem mogu opasne tvari doći u podzemne vode i ući u naš prehrambeni lanac i time oštetiti naše zdravlje.

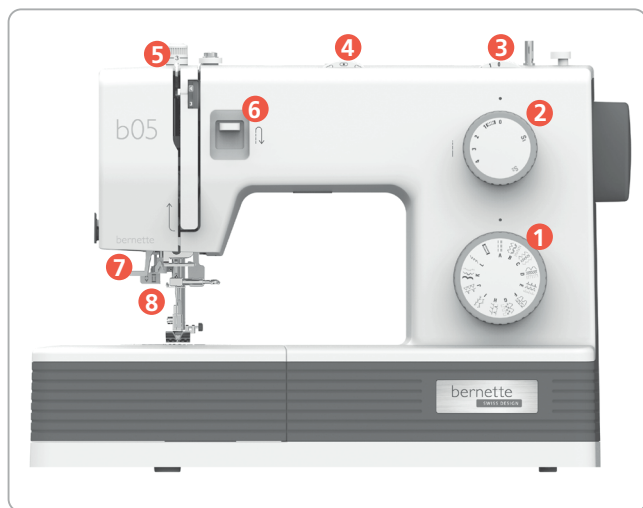
Stroj se mora vratiti besplatno na obližnjem mjestu za prikupljanje elektroničke opreme (EEE) ili na mjestu recikliranja za ponovnu uporabu stroja. Informacije o mjestima prikupljanja dostupne su kod lokalnog vijeća. Kod kupnje novog stroja, trgovac je dužan besplatno uzeti stari stroj i zbrinuti ga ispravno.

Ako stroj sadrži osobne podatke, osobno ste odgovorni ako se kod vraćanja stroja obrišu podaci.

# Sadržaj

Pregled stroja .....	1
Prvi koraci .....	2
Namotavanje donjeg konca na špulicu .....	2
Udijevanje donjeg konca .....	3
Udijevanje gornjeg konca .....	5
Izmjena šivaće stopice .....	7
Izmjena igle .....	8
Biranje uboda .....	9
Održavanje i čišćenje .....	13
Otklon grešaka .....	16
Pregled uboda .....	19

# Pregled stroja

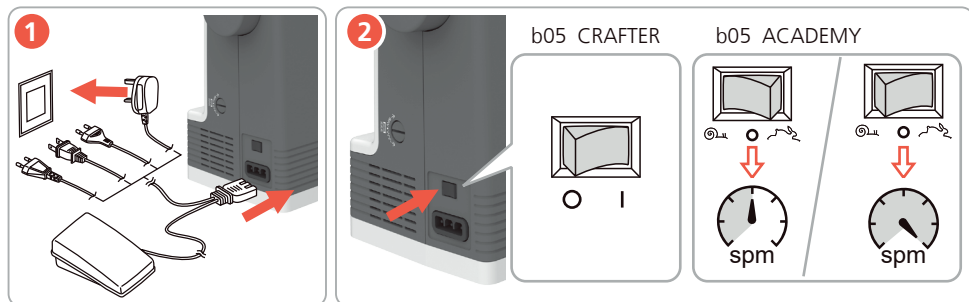


- 1 Kotač za izbor boda
- 2 Kotač za duljinu boda
- 3 Kotač za širinu boda
- 4 Kotač za poziciju igle
- 5 Podešavanje pritiska na šivaću stopicu
- 6 Poluga za šivanje unazad
- 7 Udjevač konca u iglu
- 8 poluga za rupicu

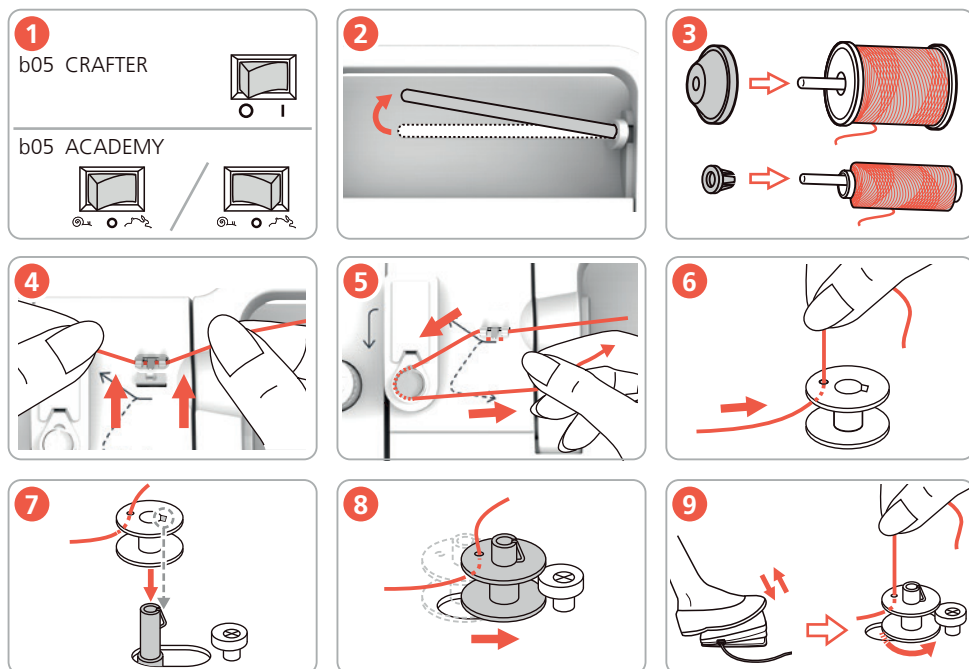
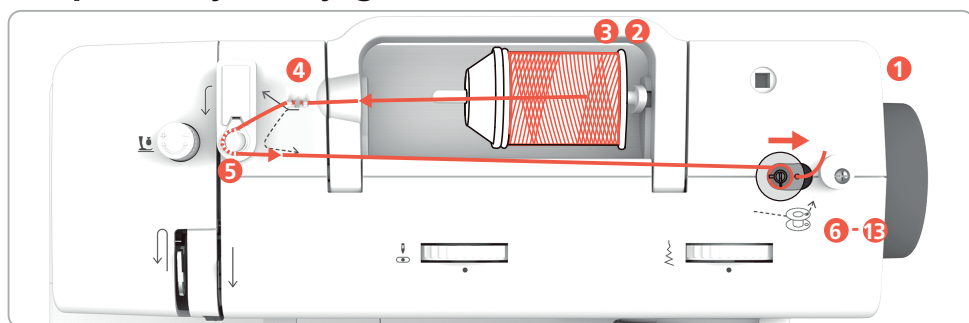


- 9 Zamašnjak
- 10 Kotač za podešavanje balansa
- 11 Glavni prekidač sa ograničenjem brzine šivanja (za b05 ACADEMY)  
Glavni prekidač (za b05 CRAFTER)
- 12 Priključak za naponski kabel-/nožni reostat

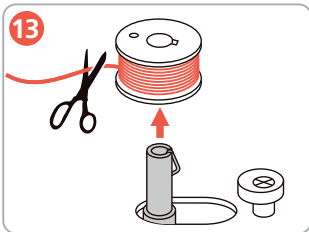
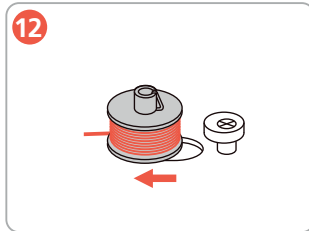
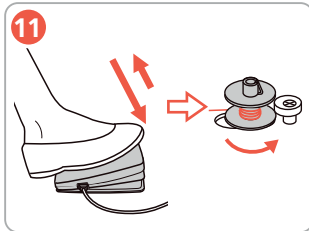
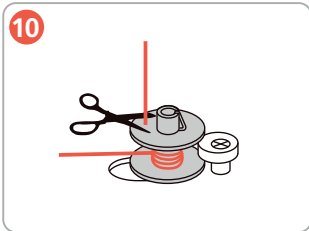
# Prvi koraci



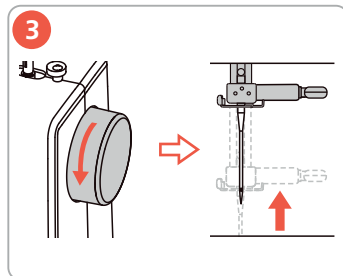
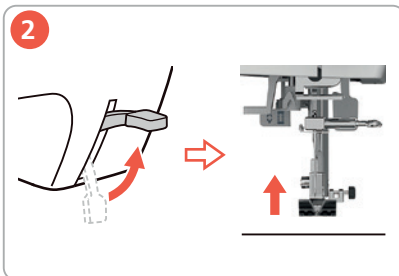
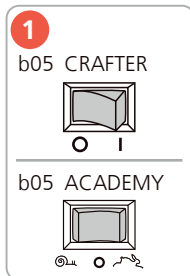
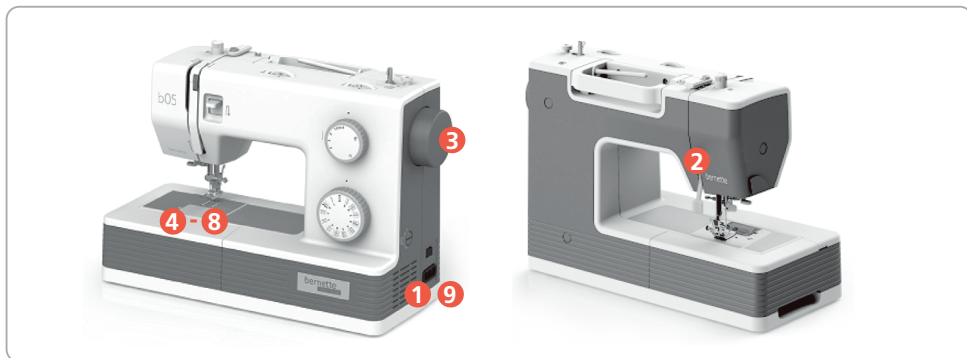
# Našpulavanje donjeg konca

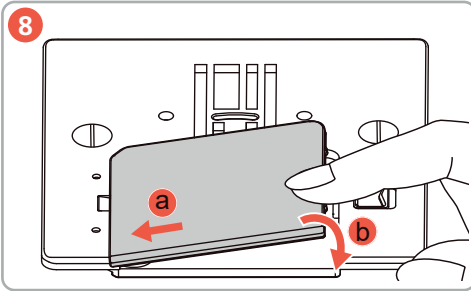
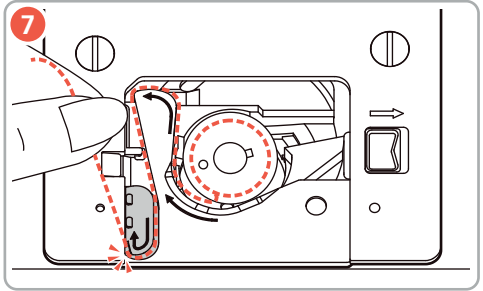
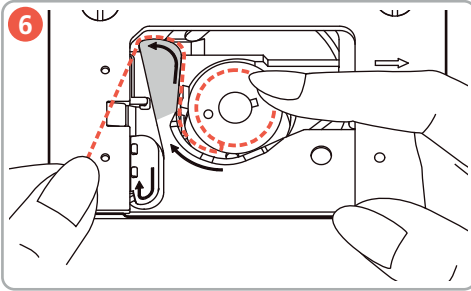
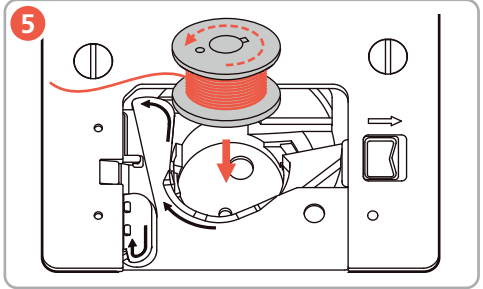
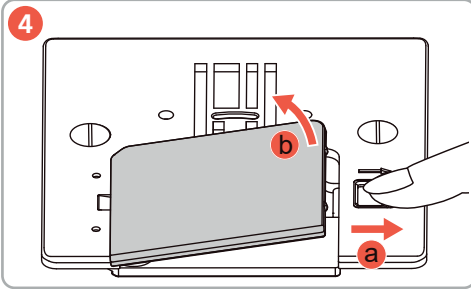





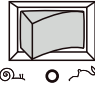


## Udijevanje donjeg konca


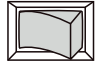




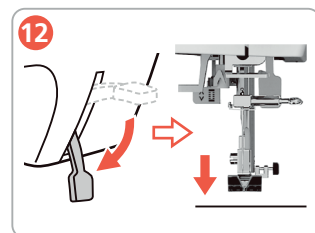
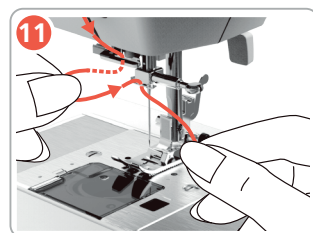
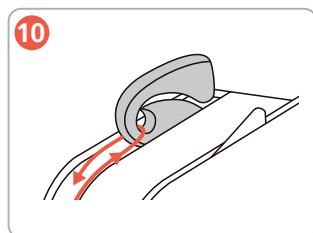
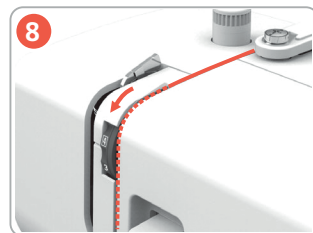
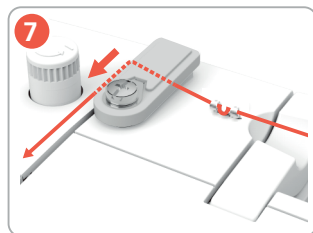
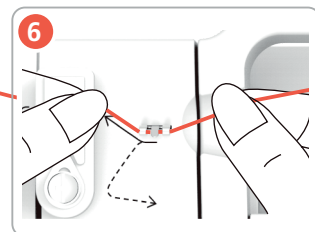
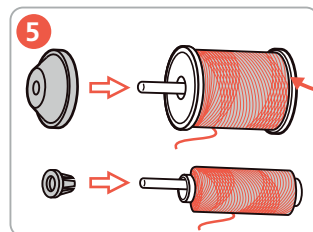
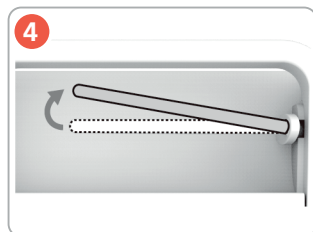
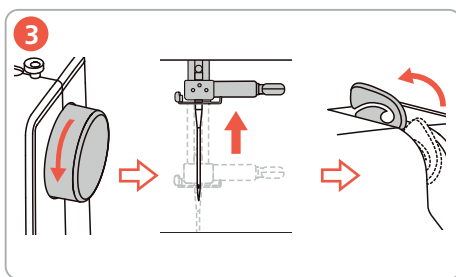
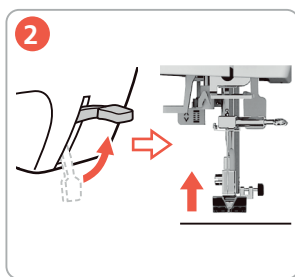
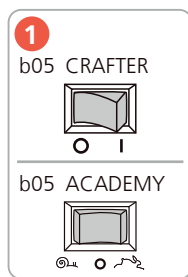
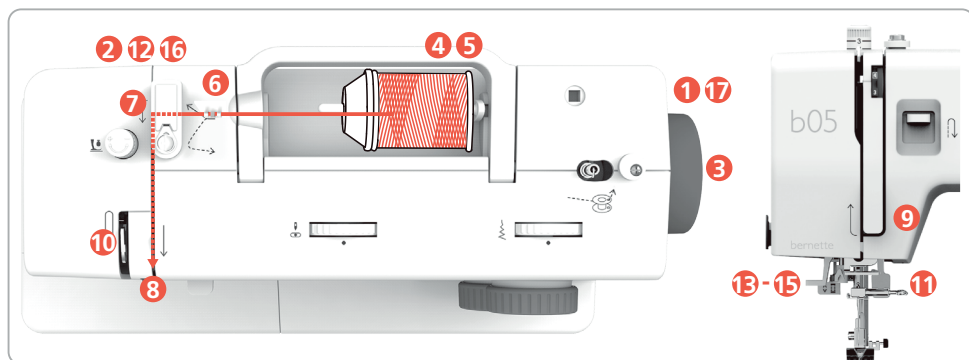
**9**

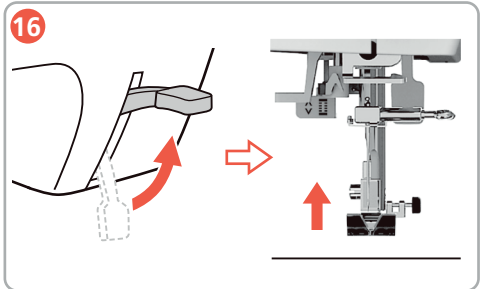
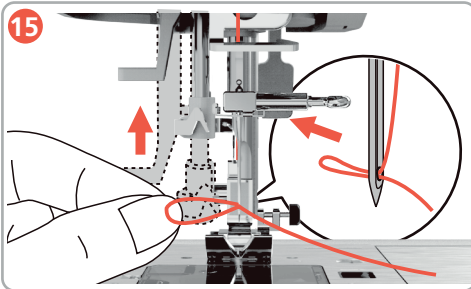
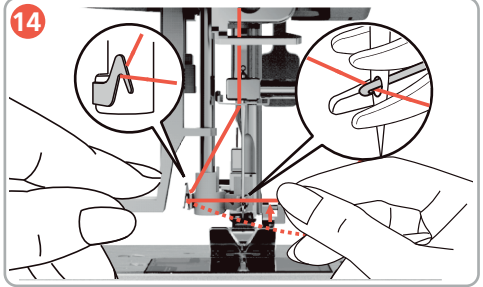
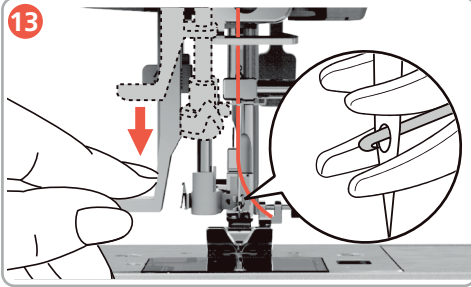
b05 CRAFTER  

---

b05 ACADEMY  

# Udijevanje gornjeg konca





**17**

b05 CRAFTER

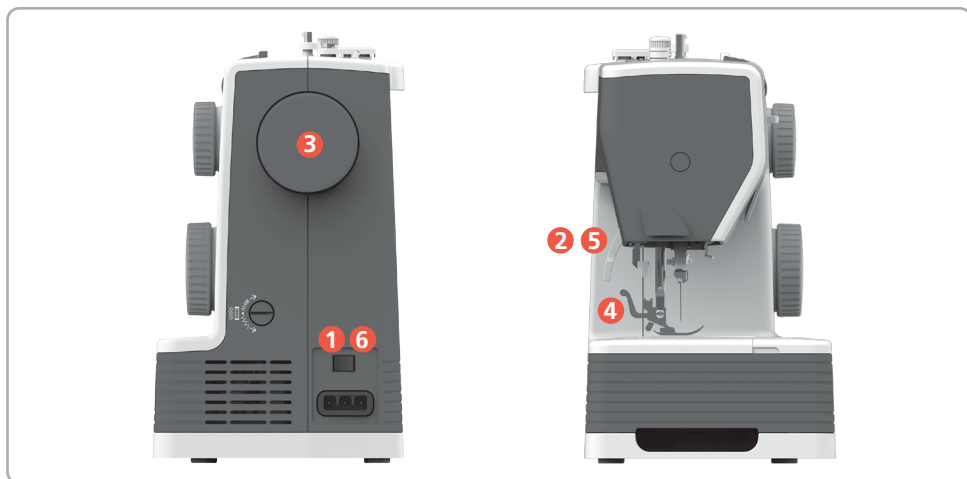
O I


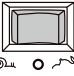
---



b05 ACADEMY

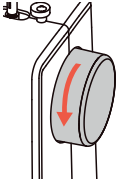
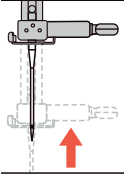
⊙ ⊙ ⊙ / ⊙ ⊙ ⊙

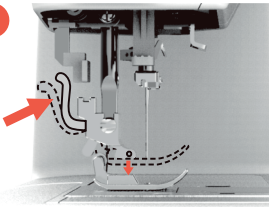
# Izmjena šivaće stopice

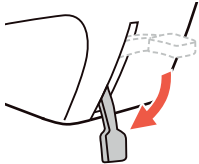
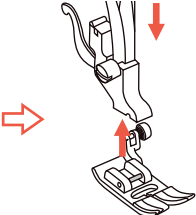





**1**  
b05 CRAFTER  
  
b05 ACADEMY  


**2**  
  


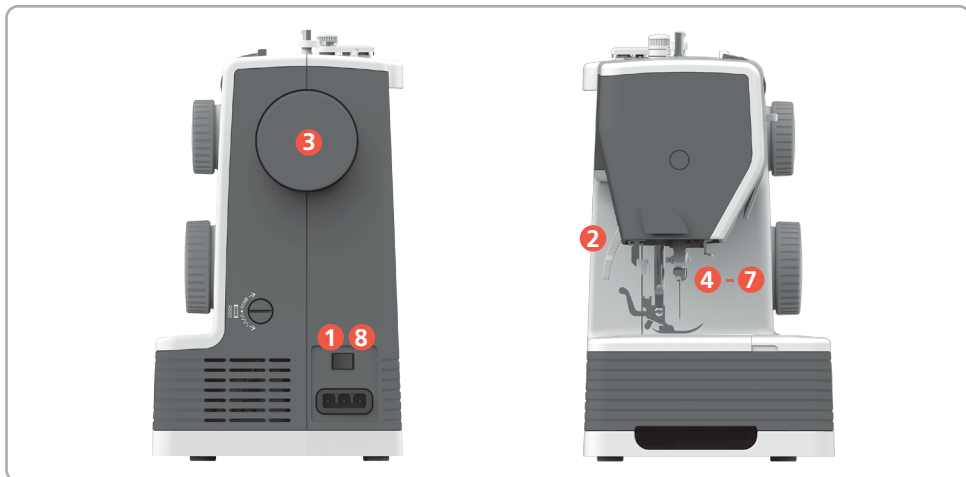
**3**  
  



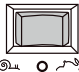
**4**  


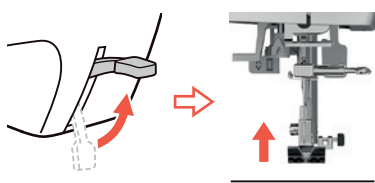
**5**  
  


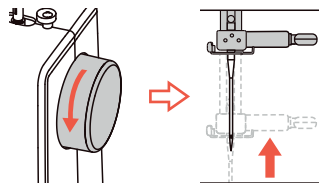
**6**  
b05 CRAFTER  
  
b05 ACADEMY  
 / 

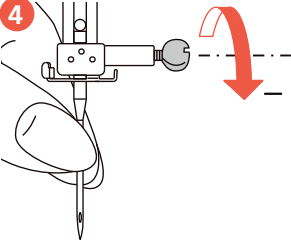
# Izmjena igle

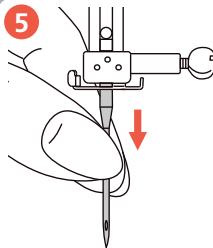


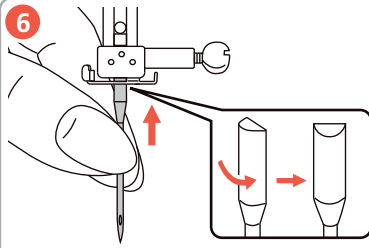
**1**  
b05 CRAFTER  
  
b05 ACADEMY  


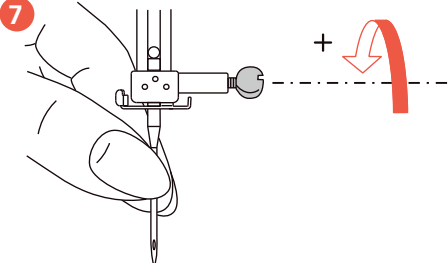
**2**  


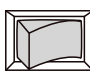


**3**  


**4**  


**5**  


**6**  


**7**  


**8**  
b05 CRAFTER  
  
b05 ACADEMY  
 / 

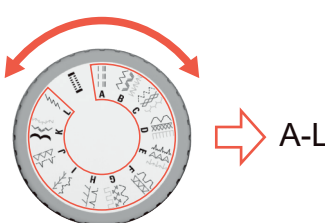
# Izbor uboda

Kotač za duljinu boda	Kotač za izbor boda												
		A	B	C	D	E	F	G	H	I	J	K	L
0~4													
S1													
S2													



# Izbor boda u osnovnom modusu

**1**



A-L

Kotač za duljinu boda	Kotač za izbor boda											
	A	B	C	D	E	F	G	H	I	J	K	L
1												
0-4	---	~~~~~	~~~~~	~~~~~	~~~~~	~~~~~	~~~~~	~~~~~	~~~~~	~~~~~	~~~~~	~~~~~
S1												
S2												

**2**

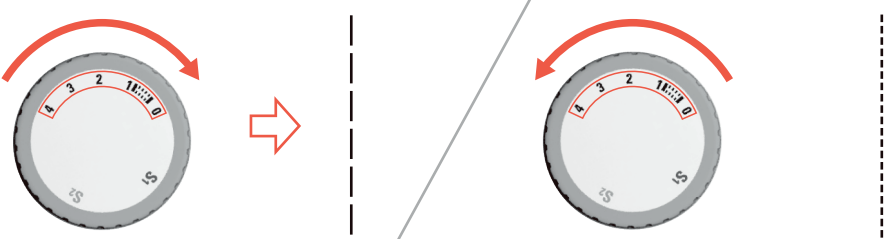


Diagram illustrating the selection of line styles based on tool rotation. The left side shows a tool with segments 4, 3, 2, 1, 0 and 'S1' markings, resulting in a dashed line. The right side shows the same tool with segments 4, 3, 2, 1, 0 and 'S2' markings, resulting in a solid line.

**3**




Diagram illustrating the selection of wavy line styles based on tool rotation. The left side shows a tool with segments 4, 3, 2 and 'S1' markings, resulting in a wavy line. The right side shows the same tool with segments 4, 3, 2 and 'S2' markings, resulting in a different wavy line style.



## Izbor boda u modusu S1 ili S2

**1**

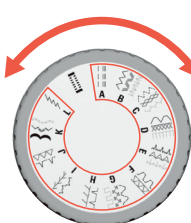


Diagram showing a circular tool with segments labeled A through L. An arrow points to the text "A-L".

Kotač za duljinu boda	Kotač za izbor boda											
	A	B	C	D	E	F	G	H	I	J	K	L
1												
0-4												
S1												
S2												

**2**

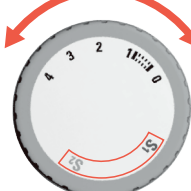


Diagram showing a circular tool with segments labeled S1 and S2. An arrow points to the text "S1/S2".

Kotač za duljinu boda	Kotač za izbor boda											
	A	B	C	D	E	F	G	H	I	J	K	L
1												
0-4												
S1												
S2												

**3**

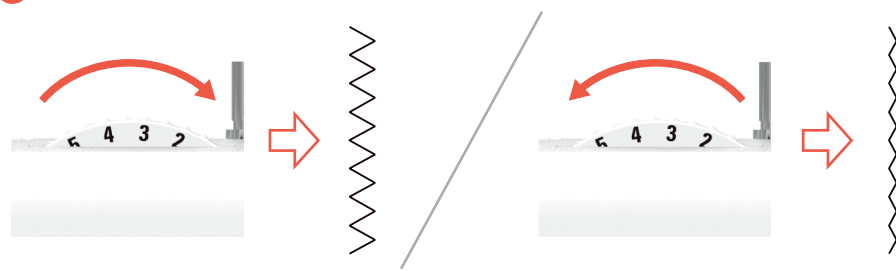
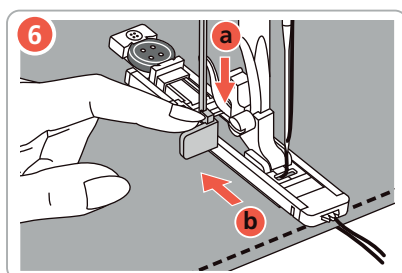
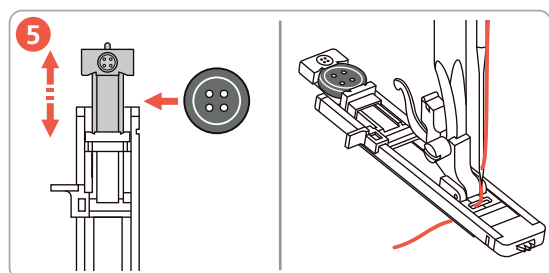
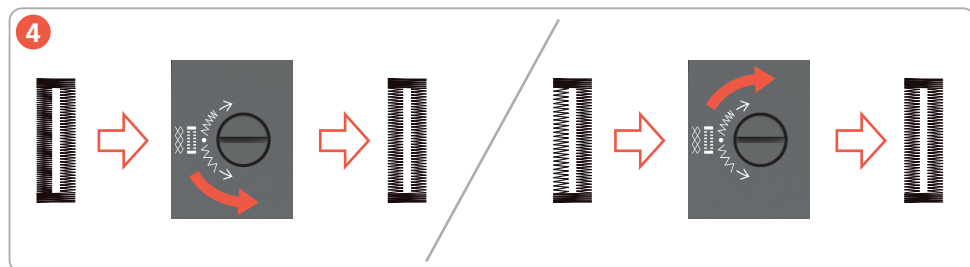
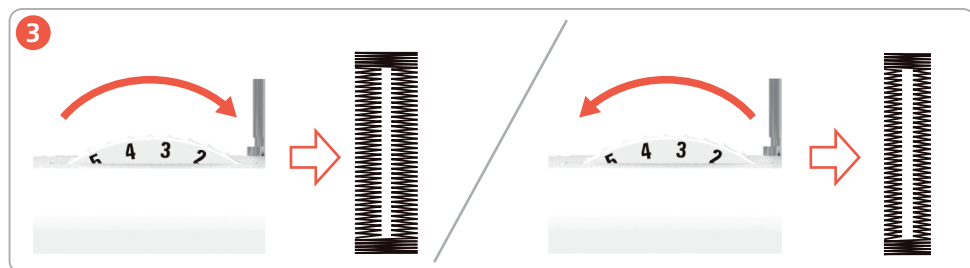
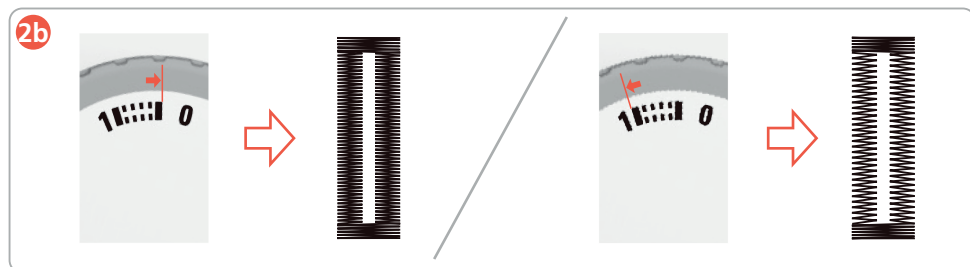
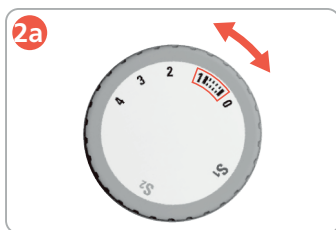


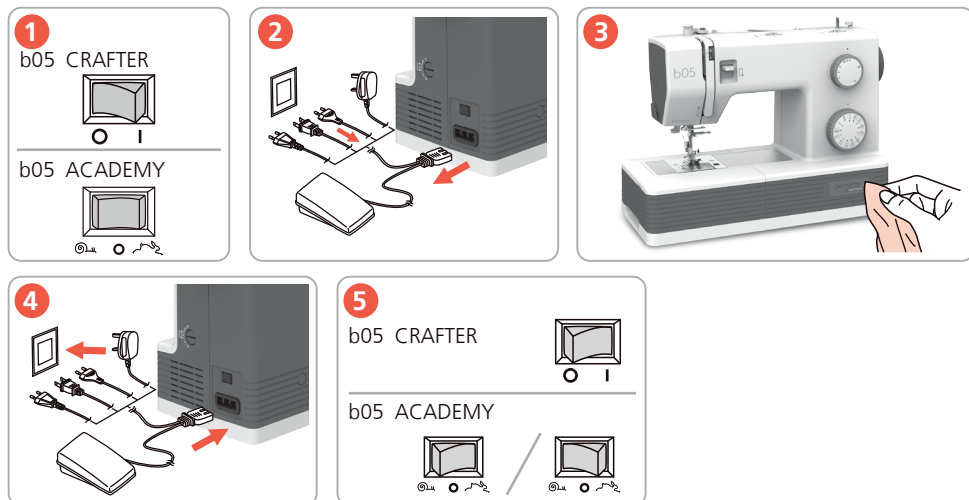
Diagram showing the application of the tool to a surface. The tool is shown in two positions, with arrows indicating the direction of movement. The resulting surface pattern is shown as a wavy line.

## Odabir rupice



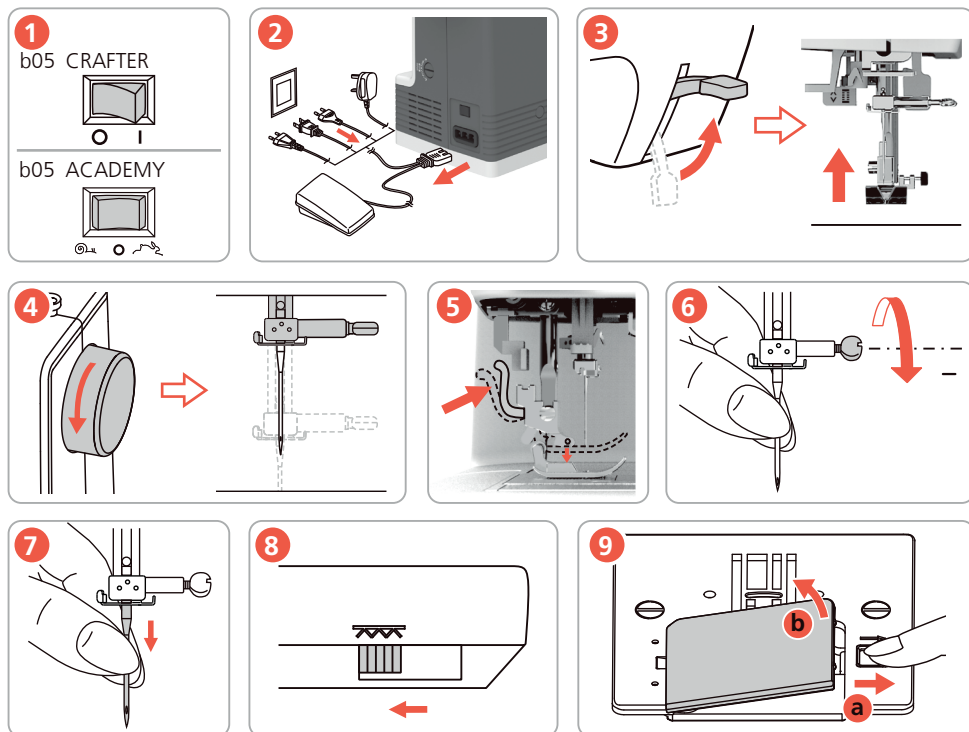
# Čišćenje i održavanje

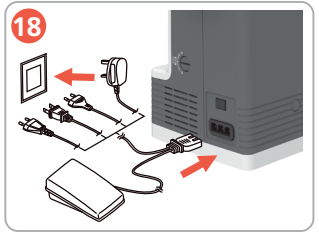
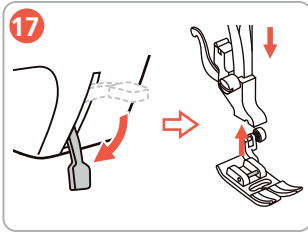
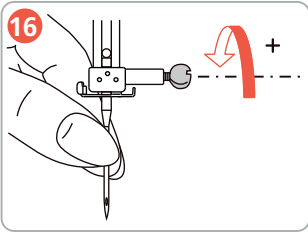
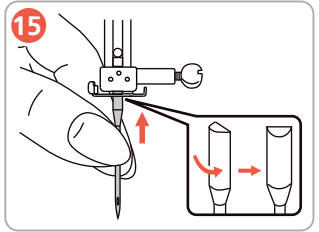
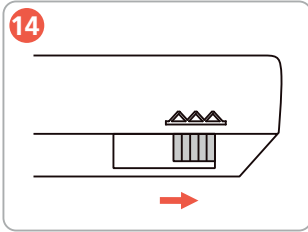
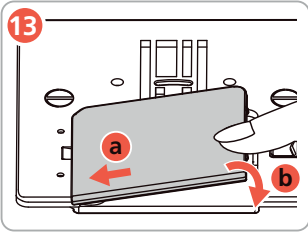
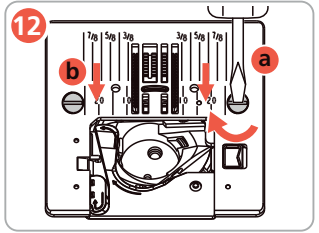
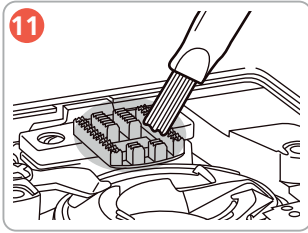
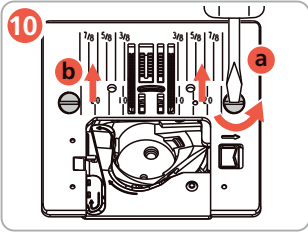
## Čišćenje površine stroja




Ne koristite organska otapala ili sredstva za čišćenje.

## Čišćenje transportera







**19**


b05 CRAFTER   
 O I

---

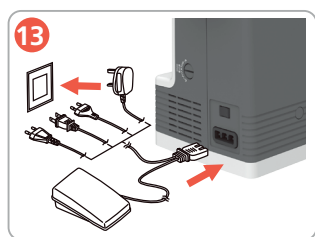
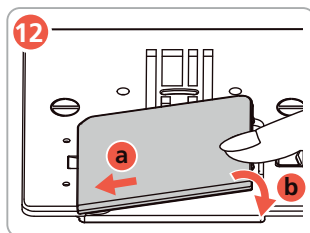
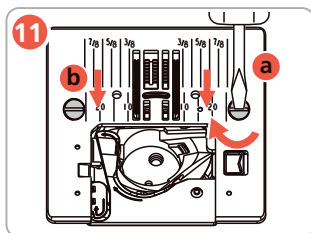
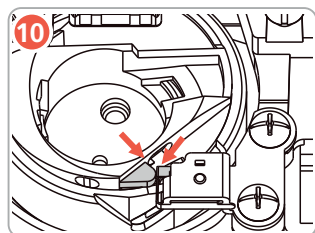
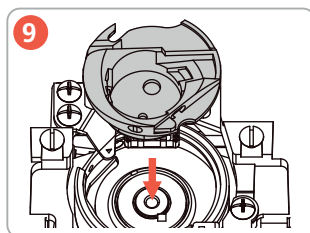
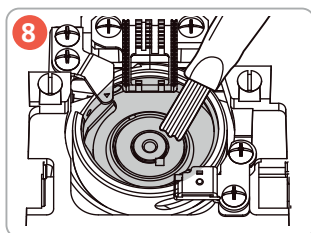
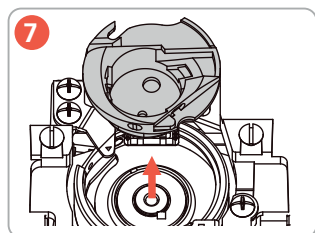
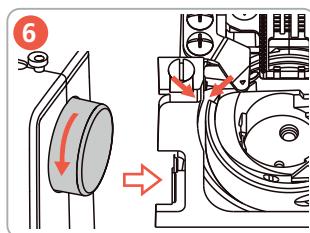
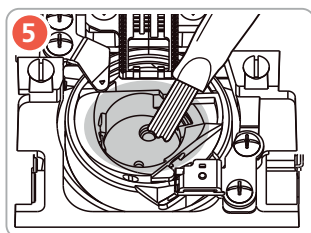
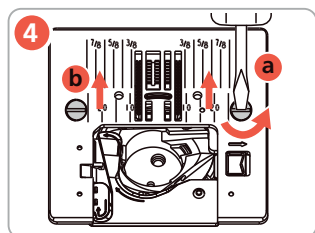
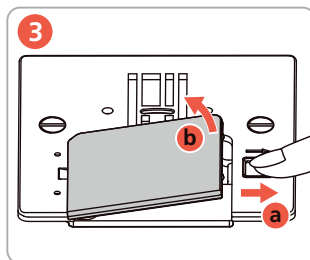
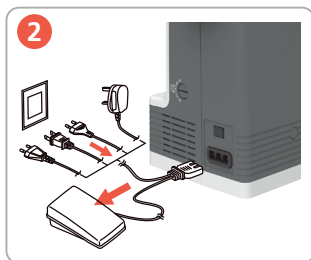

b05 ACADEMY  /   
 O I

## Čišćenje hvatača konca


**1**  
b05 CRAFTER




b05 ACADEMY



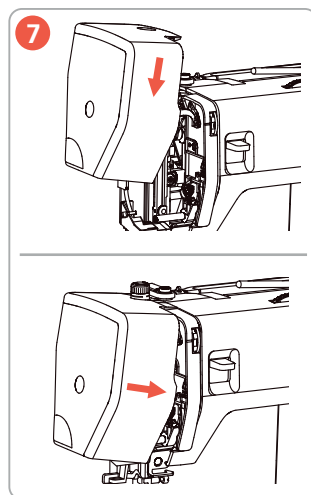
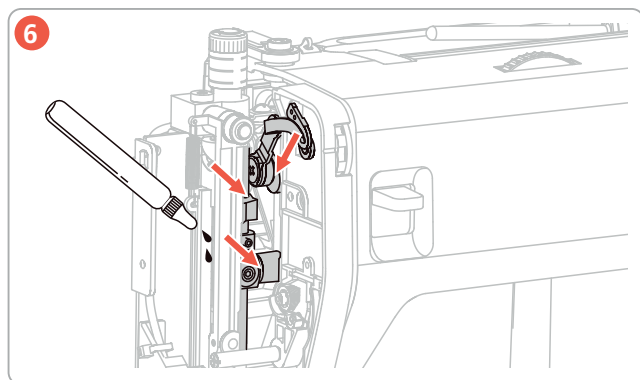
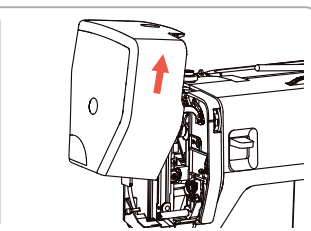
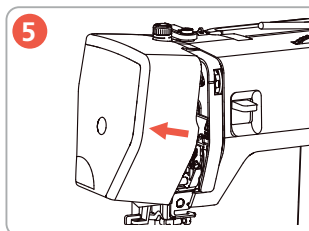
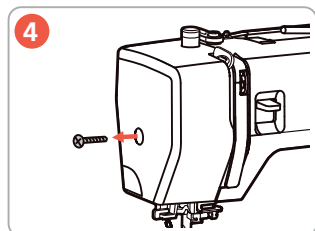
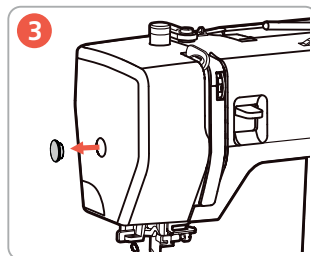
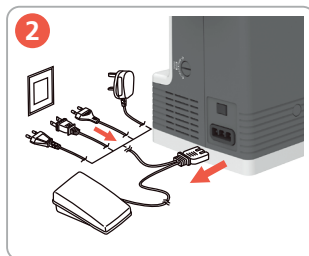
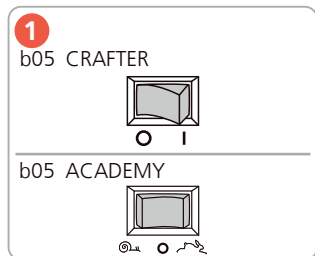
**14**  
b05 CRAFTER



b05 ACADEMY

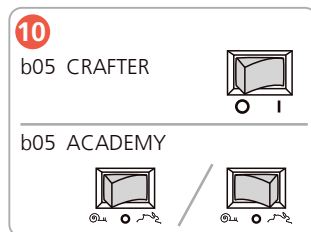
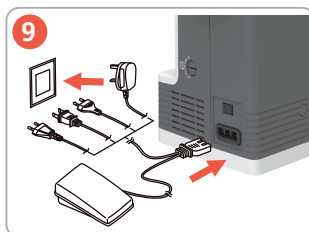
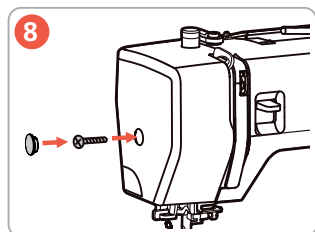


## Podmazivanje iglenjače



### ⚠ Pažnja

Nakon skidanja poklopca glave stroja, pazite na pokretne dijelove.




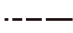






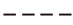






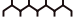






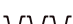




# Rješavanje problema















Poremećaj	Uzrok	Rješenje
Neravnomjerno stvaranje ubodne slike	Gornji konac je prejak/preslab.	Podešavanje gornje napetosti konca.
	Igla je tupa ili savinuta.	Izmijenite iglu i budite sigurni da ste umetnuli jednu kvalitetnu BERNINA iglu..
	Loša kvaliteta igle.	Koristite nove BERNINA kvalitetne igle.
	Loša kvaliteta konca.	Koristite samo kvalitetne konce.
	Krivi odnos igle-konac.	Uskladite odnos debljine igle i konca.
	Krivo udijenuti konci.	Ponovno udijenite konce.
	Tkaninu ste povlačili kod šivanja.	Ravnomjerno vodite tkaninu.
Ispuštanje uboda	Prašina ili ostaci konca se nalaze u predjelu pločica regulatora napetosti konca od čahure.	Očistite hvatač konca.
	Kriva igla.	Koristite samo igle sistema 130/705H .
	Igla je tupa ili savinuta.	Izmijenite iglu.
	Loša kvaliteta igle.	Koristite nove BERNINA kvalitetne igle.
	Igla je krivo umetnuta.	Iglu umetnite sa plosnatom stranom prema nazad i gurnite prema gore u držač igle, zatim zategnite vijak.
Krivi vrh igle.	Uskladite vrh igle strukturi šivaćeg projekta.	
Greška u šavu	Ostaci konca između pločica regulatora napetosti gornjeg konca.	Preklopljenu, tanku tkaninu (ne koristite vanjske rubove) povucite više puta kroz pločice regulatora napetosti konca.
	Krivo udjeven stroj.	Ponovno udijenite stroj.
	Konac je u hvataču konca blokiran.	Odstranite gornji i donji konac, okrenite zamašnjakom naprijed i unazad i odstranite zaostale konce.
	Krivi odnos igle-konac.	Provjerite odnos igle-konac.

Poremećaj	Uzrok	Rješenje
Puknuće gornjeg konca	Krivi odnos igle-konac.	Uskladite iglu prema debljini konca.
	Gornja napetost konca je prejaka.	Smanjite napetost gornjeg konca.
	Krivo udijeven stroj.	Ponovno udijenite stroj.
	Loša kvaliteta konca.	Koristite samo kvalitetne konce.
	Ubodna rupica na ubodnoj pločici ili vrh hvatača konca su oštećeni.	- Kontaktirajte bernette-stručnog serviseru ili trgovca, kako bi odstranili oštećenja. - Izmijenite ubodnu pločicu.
Puknuo je donji konac	Špulica je nepravilno postavljena.	- Izvadite špulicu, ponovno je umetnite i povucite za konac. → Konac bi se trebao lagano pokretati.
	Špulica je krivo našpulana/namotana.	Provjerite špulicu i pravilno našpulajte konac na špulicu.
	Ubodna rupica na ubodnoj pločici je oštećena.	- Kontaktirajte bernette-stručnog serviseru ili trgovca, kako bi odstranili oštećenja. - Izmijenite ubodnu pločicu.
	Igla je tupa ili savinuta.	Izmijenite iglu.
Igla puca	Igla je krivo umetnuta.	Iglu umetnite sa plosnatom stranom prema nazad i gurnite prema gore u držač igle, zatim zategnite vijak.
	Tkaninu ste povlačili kod šivanja.	Ravnomjerno vodite tkaninu.
	Debela tkanina se gurala kod šivanja.	- Koristite odgovarajuću šivaću stopicu, npr. Jeans stopica, za debele tkanine. - Koristite visinsku razliku za šavna mjesta.
	Zapetljan konac.	Koristite samo kvalitetne konce.
Stroj se ne pokreće	Stroj nije uključen.	Uključite stroj.
	Šivaća stopica je podignuta.	Spustite polugu šivaće stopice.
	Stroj nije priključen na naponsku mrežu.	Spojite naponski utikač u naponsku mrežu.
	Stroj je u defektu.	Kontaktirajte bernette-stručnog serviseru.
Šivaće svijetlo ne svijetli	Šivaće svijetlo je pokvareno.	Kontaktirajte bernette-stručnog serviseru.



# Pregled uboda

Vrsta uboda					Napetost konca		Pozicija igle		
									
	BH	4~6	0,3~0,5	2	4		V	V	V
	A	0	0,5~4	2	4	V	V	V	V
	S1_A	0	S1	2	4		V	V	V
	B	2~6	0,3~4	2	4	V	V	V	V
	S1_B	3~6	S1	2	4		V	V	V
	S2_B	3~6	S2	2	4		V	V	V
	C	3~6	0,5~2,5	2	4	V	V	V	V
	S1_C	3~6	S1	2	4		V	V	V
	S2_C	3~6	S2	2	4		V	V	V
	D	3~6	1~3	2	4	V	V	V	V
	S1_D	3~6	S1	2	4		V	V	V
	S2_D	3~6	S2	2	4		V	V	V
	E	3~6	0,5~1,5	2	4	V	V	V	V
	S1_E	3~6	S1	2	4		V	V	V
	S2_E	3~6	S2	2	4		V	V	V
	F	3~6	0,5~2	2	4	V	V	V	V
	S1_F	3~6	S1	2	4		V	V	V
	G	3~6	0,5~2	2	4	V	V	V	V
	S1_G	3~6	S1	2	4		V	V	V
	S2_G	3~6	S2	2	4		V	V	V

Vrsta uboda					Napetost konca		Pozicija igle		
									
..A..A.	H	3~6	1~2,5	2	4	V	V	V	V
////	S1_H	3~6	0,5~4	2	4		V	V	V
	I	3~6	0,5~2	2	4	V	V	V	V
	S1_I	3~6	S1	2	4		V	V	V
~V~V~V	J	3~6	1~2,5	2	4	V	V	V	V
	S1_J	3~6	S1	2	4		V	V	V
	K	3~6	0,5~1,5	2	4	V	V	V	V
	S1_K	3~6	S1	2	4		V	V	V
	S2_K	3~6	S2	2	4		V	V	V
	L	1~2,5	3~4	2	4		V	V	V



Za detaljne informacije, odaberite Online-upute za rad ili videozapise s uputama [www.mybernette.com/](http://www.mybernette.com/) ili skenirajte QR-Côde na svom mobilnom telefonu.



[www.bernette.com/b05ACADEMY](http://www.bernette.com/b05ACADEMY)



[www.bernette.com/b05CRAFTER](http://www.bernette.com/b05CRAFTER)

5200105.0.17 / 021Q6K0702 | hr 2023-06

© BERNINA International AG  
Steckborn CH, [www.berнина.com](http://www.berнина.com)